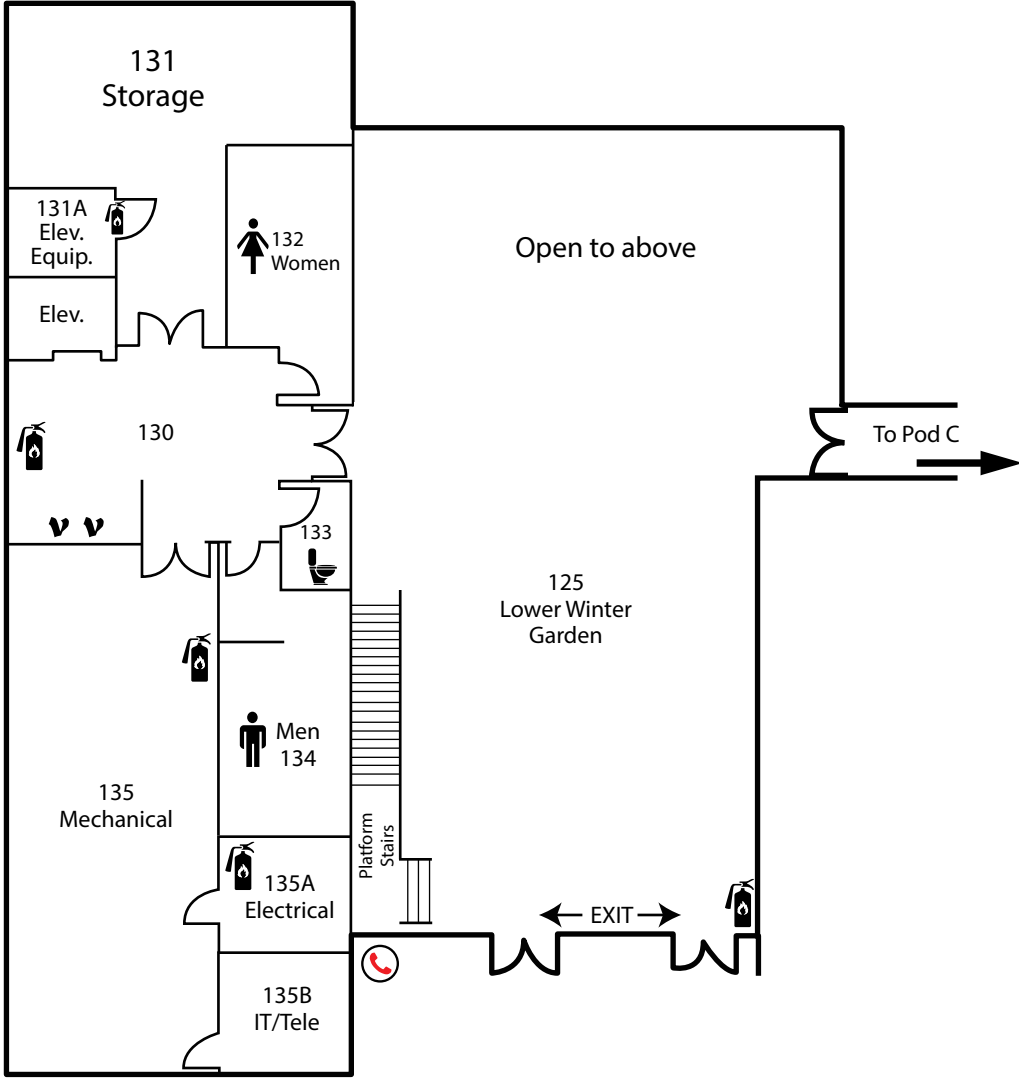






Rainier Building (RAI)

First/Orange Level - Pod B

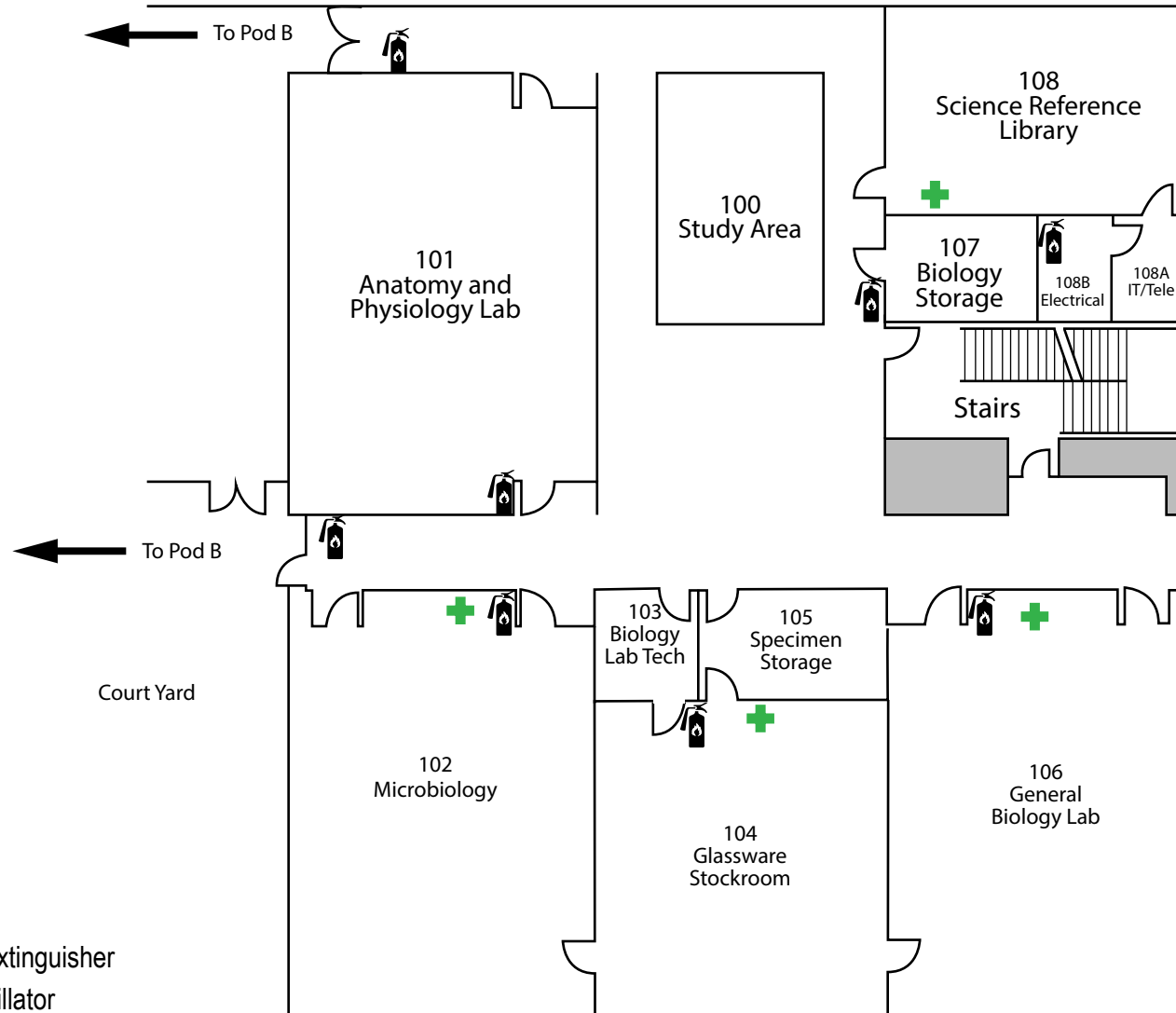






-  Fire Extinguisher
-  Defibrillator
-  First Aid Kit
-  Emergency Call Box

-  All Gender Restroom
-  Vending Machine

Rainier Building (RAI)

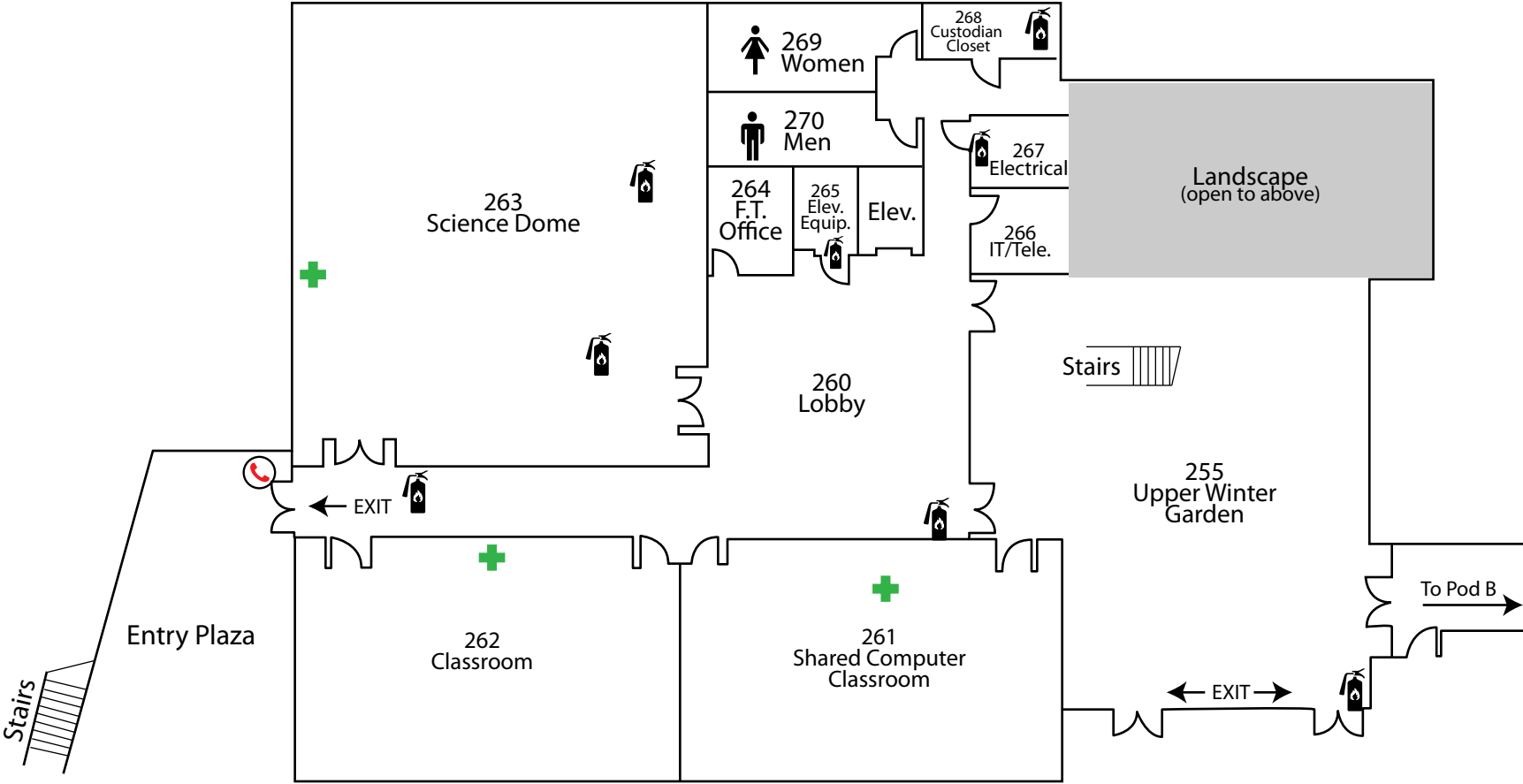
First/Orange Level - Pod C







-  Fire Extinguisher
-  Defibrillator
-  First Aid Kit
-  Emergency Call Box





Rainier Building (RAI)

Second/Blue Level - Pod A

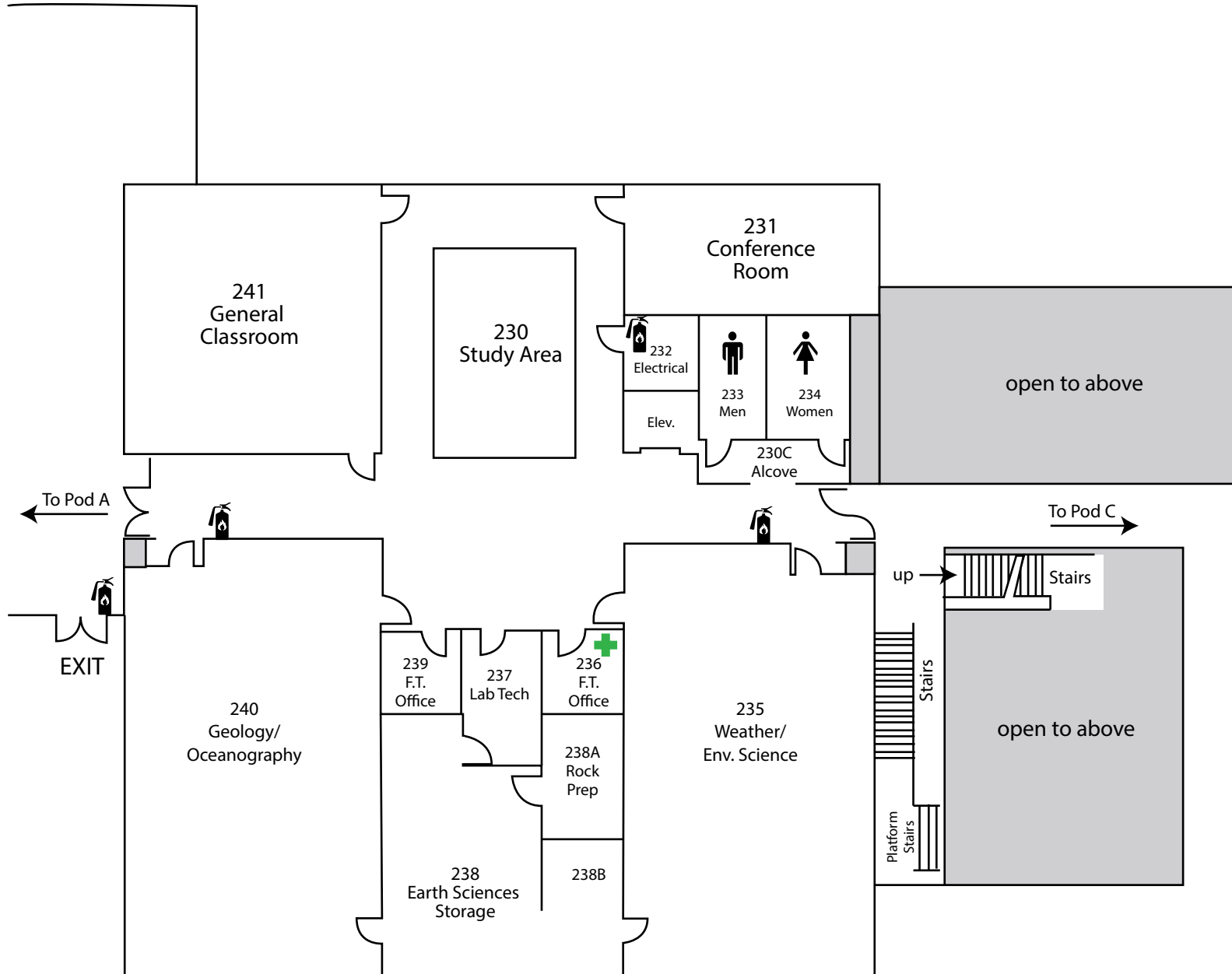


-  Fire Extinguisher
-  Defibrillator
-  First Aid Kit
-  Emergency Call Box

Rainier Building (RAI) Second/Blue Level - Pod B

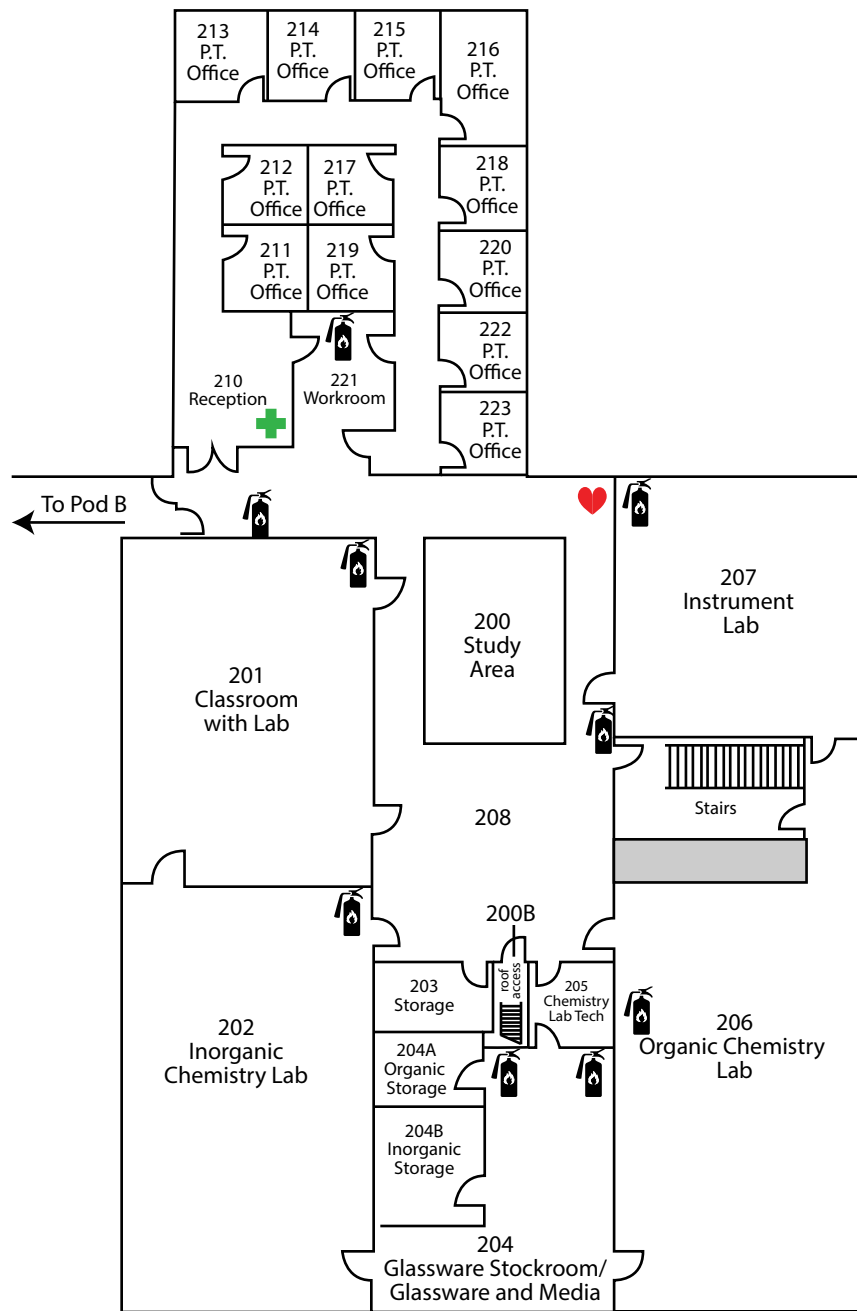
-  Fire Extinguisher
-  Defibrillator
-  First Aid Kit
-  Emergency Call Box





Updated 05-23-18



Rainier Building (RAI)

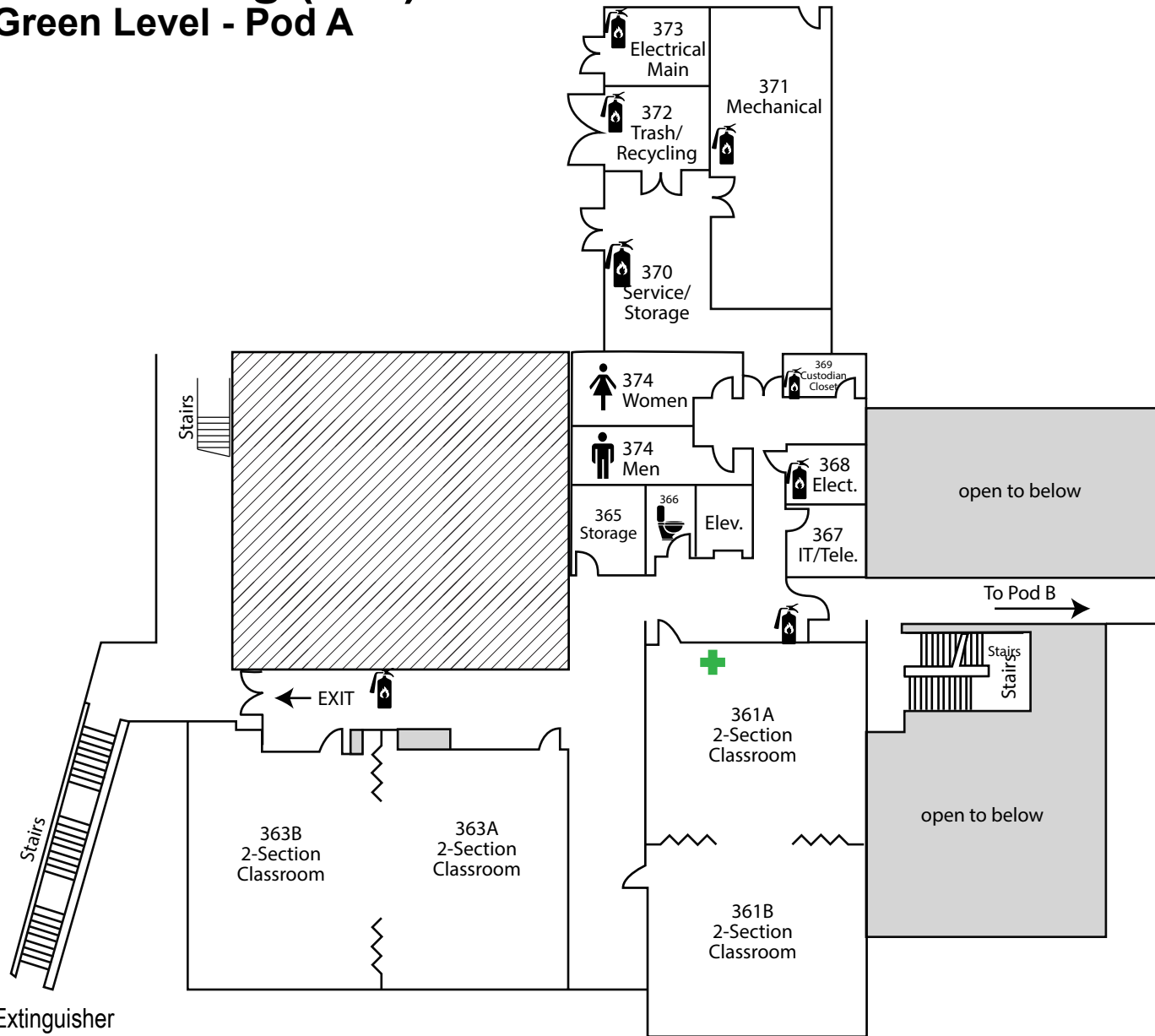
Second/Blue Level - Pod C



-  Fire Extinguisher
-  Defibrillator
-  First Aid Kit
-  Emergency Call Box

Rainier Building (RAI)

Third/Green Level - Pod A



 Fire Extinguisher

 Defibrillator

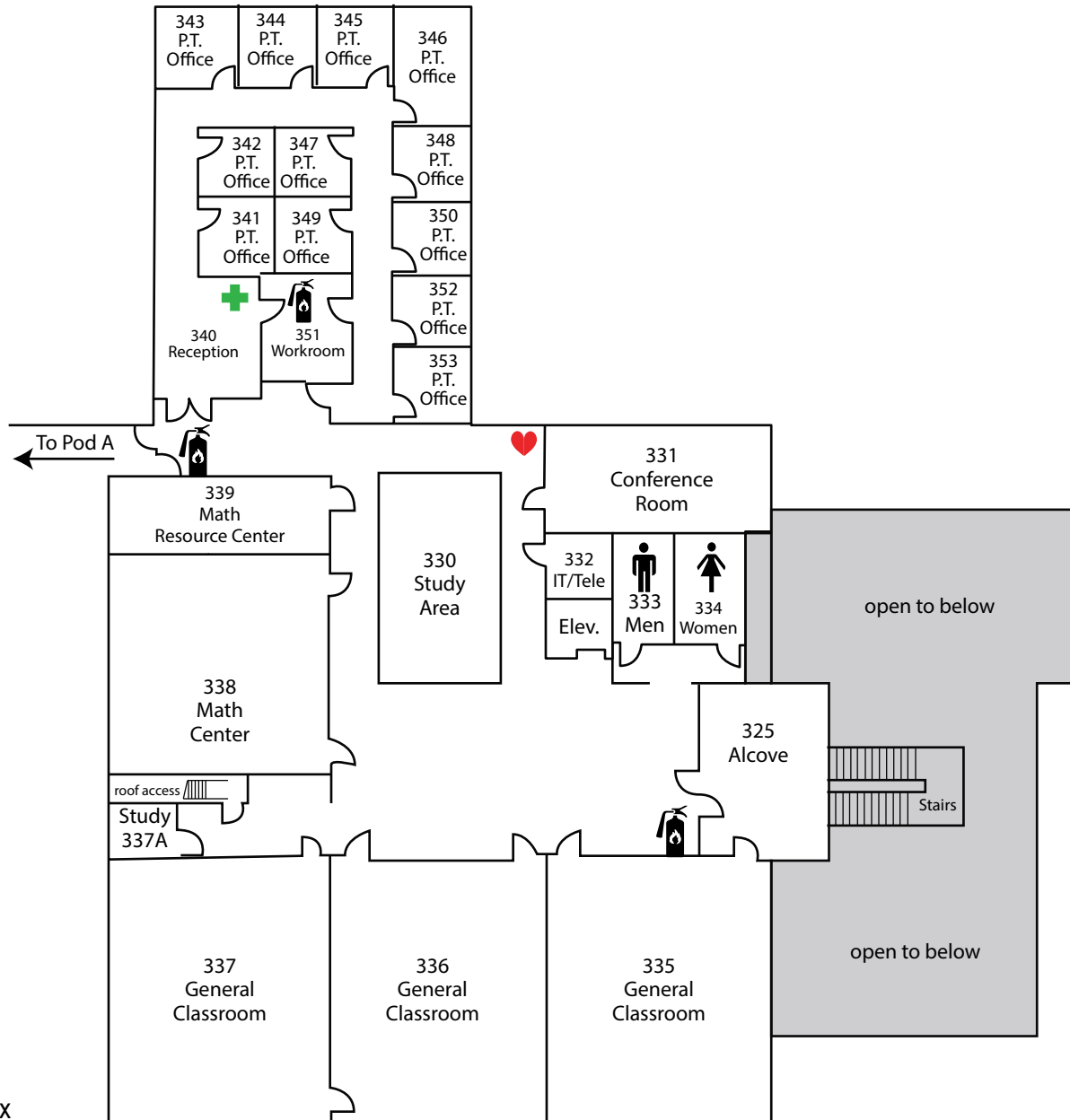
 First Aid Kit





 Emergency Call Box

 All Gender Restroom

Rainier Building (RAI)

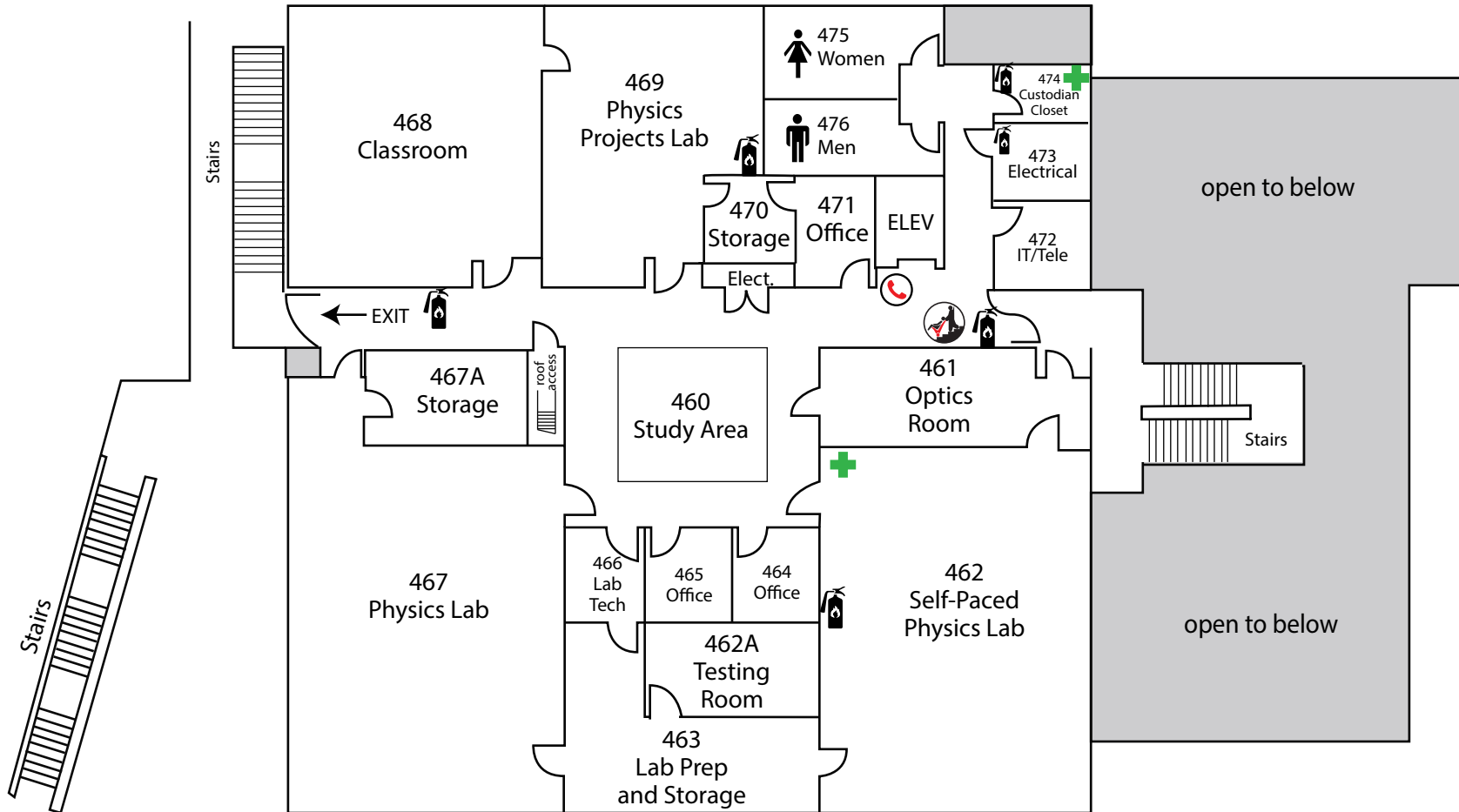
Third/Green Level - Pod B




-  Fire Extinguisher
-  Defibrillator
-  First Aid Kit
-  Emergency Call Box

Rainier Building (RAI)

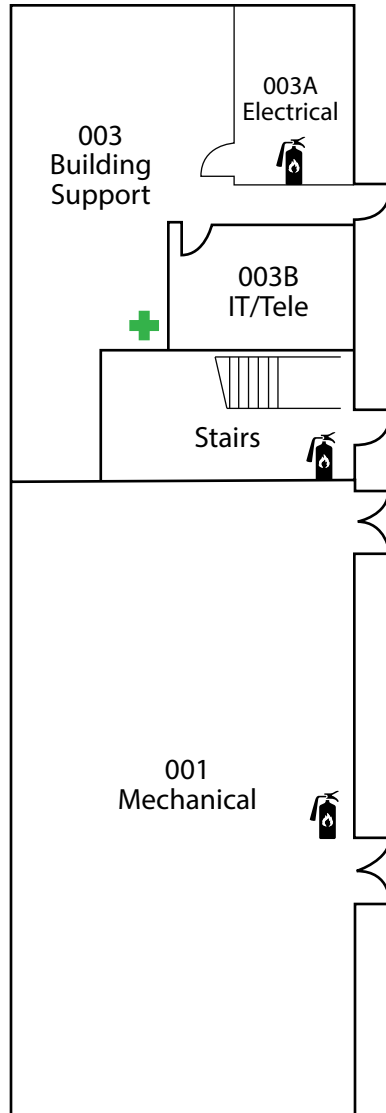
Fourth/Yellow Level - Pod A







-  Fire Extinguisher
-  Defibrillator
-  First Aid Kit
-  Emergency Call Box
-  Evacuation Chair

Rainier Building (RAI)

Basement Level - Pod C



-  Fire Extinguisher
-  Defibrillator
-  First Aid Kit
-  Emergency Call Box