

QUARTERLY BULLETIN and COMMUNITY & CONTINUING EDUCATION SCHEDULE

POSSIBILITIES

SPRING TERM 2022

PIERCE COLLEGE

Prepared

Pierce College alum
works hard to help keep
the community safe

pg. 2

Spring term registration
open now!

Fun, non-credit
classes

pg. 7

Teachers, get your
clock hours here!

pg. 13



Getting Started

REGISTER TODAY!

Spring term session 1 begins April 4

1

ADMISSIONS APPLICATION

Submit an admissions application at www.pierce.ctc.edu/apply-admission
FS: 253-964-6501 | PY: 253-864-3254

The Bachelor of Applied Science degrees, Veterinary Technology, Nursing and International Education require special admission procedures.

2

EXPLORE FUNDING

Apply for financial aid (grants and loans) and learn about payment options.

For more funding options and timelines visit: www.pierce.ctc.edu/pay-college
Financial Aid: 253-964-6544

3

DETERMINE YOUR STARTING POINT

Placement for English, reading and math classes can be determined in multiple ways such as Smarter Balanced Assessment scores, high school or college transcripts, placement reciprocity, or a computer-based assessment.

www.pierce.ctc.edu/testing-centers
FS: 253-964-6521 | PY: 253-840-8343

4

GET CONNECTED

Log in to MyPierce to set up your student email and complete the Student Guide. After you've finished the guide, you will schedule your advising appointment.

www.pierce.ctc.edu/get-connected
FS: 253-964-6705 | PY: 253-840-8431

5

REGISTER FOR CLASSES

After seeing your advisor, register for classes and pay your tuition and fees.

www.pierce.ctc.edu/register-and-pay
FS: 253-964-6615 | PY: 253-840-8413

FS - Fort Steilacoom campus | PY - Puyallup campus



EXPERIENCE PIERCE

The best way to get to know Pierce College is to visit the campus virtually! We welcome you to experience both of our beautiful campuses and learn more about how we can help you get started on your educational path. Take a virtual tour today:

 <https://tour.lcp360.com/nocache/pierce/>

IMPORTANT DATES

Presidents Day - college closed	Feb. 21
Open spring registration begins (new students)	Feb. 22
Last day of instruction, winter session 1, JBLM	March 9
Last day of instruction, winter session 1, FS/PY	March 17
Finals FS/PY	March 18, 21, 22
Last day of instruction, winter session 2, FS/PY, JBLM	March 22
Spring term session 1 begins	April 4
Pre-registration advising begins for summer/fall	April 25
In-service Day - no classes/college closed	May 6
Summer/fall registration begins (currently enrolled students)	May 9
Open summer/fall registration begins (new students)	May 23
Memorial Day - college closed	May 30
JBLM Graduation	June 3
Last day of instruction, spring session 1, JBLM	June 6
Last day of instruction, spring session 1, FS/PY	June 14
Spring session 1, final exams FS/PY	June 15-17
Graduation	June 17
Last day of instruction, spring session 2, FS/PY, JBLM	June 17

The full academic calendar is at www.pierce.ctc.edu

Possibilities Vol. 55, No. 3 • USPS 7034 • Spring 2022
Published quarterly by Pierce College, 9401 Farwest Dr. SW, Lakewood, WA 98498-1999.
Periodicals postage paid at Tacoma, WA. **POSTMASTER:** Send address changes to Pierce College, Marketing & Communications, 1601 39th Ave. SE, Puyallup, WA 98374-2222.

COVER STORY



PIERCE COLLEGE ALUM WORKS HARD TO HELP KEEP THE COMMUNITY SAFE

Studying emergency management during a pandemic was an especially unique experience for Brown and his classmates. "The professors in the program took the time to put us in real-world scenarios to see what our reaction and demeanor would be," he said. "The professors in the program were always willing to go to great lengths to help us be successful."

One of his professors recommended that Brown become a tutor, allowing him to not only help students with their coursework, but also put his strong leadership skills to good use. "When I started working in the Tutoring Center, I hadn't had a lot of interaction with civilians," he said. "Having the opportunity to meet all kinds of different professors and work with students really helped prepare me for my career today."

Brown graduated in 2021 with his Bachelor of Applied Science in Homeland Security Emergency Management. Today, he works as an Emergency Management Assistant at West Pierce Fire and Rescue, where he also served as an intern while working toward his degree. In his role, he works hard to help develop cohesive, comprehensive emergency management plans so when disaster strikes, cities and agencies can operate under the same guidelines. "It's so important to make sure these plans are in place to make the community safer for everyone," he said. "I love my job because I have an opportunity to meet with so many different people from police and fire chiefs to emergency managers and public works officials. Every day, I have a chance to help people, which is what I enjoy most about my work."

When Joshua Brown retired from a distinguished 26-year career in the Army, he was ready for his next chapter. Although transitioning out of the military was not an easy experience, he looked forward to finally having the opportunity to focus on his education as he prepared for civilian life.

Many of his colleagues on base recommended that he look into Pierce College. With a location on Joint Base Lewis-McChord as well as campuses in Puyallup and Lakewood, he quickly made the decision to enroll at Pierce College. "I'm so happy I decided to attend Pierce College, because I don't believe I would be where I am in my career today without my time there," he said.

From the beginning, he had his sights set on studying Homeland Security Emergency Management (HSEM) at Pierce College. After meeting with HSEM staff, Brown was given the option to apply previous college credit and enroll directly in the Bachelor of Applied Science program, rather than starting with an associate degree. Brown opted to earn his associate degree first. "I wanted to learn everything I could about emergency management, from the ground up," he said. "I'm so glad I did, because I had a great experience in the program and was placed in an internship that provided so much valuable experience for me."



Supporting You
WHERE YOU ARE!

If you're in need of assistance in any of the following areas, don't hesitate to reach out.

FINANCIAL SUPPORT

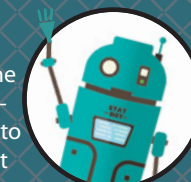
Our Financial Aid specialists are here to help! They will help you explore all options available to you, including grants, loans and emergency funding. All students are welcome to consult with Financial Aid – even if you've never worked with them in the past.

► More Info: www.pierce.ctc.edu/financial-aid or financialaid@pierce.ctc.edu



TECHNOLOGY SUPPORT

We offer the tools you need to succeed in online learning! Equipment such as Chromebooks, Wi-Fi hotspots, calculators and more are available to students to borrow for the quarter. The Student Technology Assistance Team (STAT) is available to help answer technology-related questions at stat@pierce.ctc.edu.



The Pierce College eLearning Team is also available to answer questions related to Canvas at distedu@pierce.ctc.edu. All other general questions can be sent to helpdesk@pierce.ctc.edu.

► More Info: www.pierce.ctc.edu/student-support-technology

ACADEMIC SUPPORT

Access the Library, Tutoring and the Writing Centers online. You can also stay engaged with your campus community by joining virtual clubs and activities.

► More Info: www.pierce.ctc.edu/student-support-resources



BASIC NEEDS SUPPORT

We understand that the COVID-19 pandemic has created challenges for many of our students. Our Basic Needs Resources page provides critical information that can help you find immediate food, medical, childcare and financial assistance.

► More Info: www.pierce.ctc.edu/student-support-help



ON-SITE COVID-19 TESTING AVAILABLE NOW AT PIERCE COLLEGE FORT STEILACOOM

Thanks to a new partnership with public health service startup

Curative, Pierce College Fort Steilacoom students, employees, and community members can access COVID-19 testing on campus at no out-of-pocket cost. Curative will offer up to 140 PCR COVID-19 tests per day. The site is at Pierce College Fort Steilacoom, located at 9401 Farwest Dr. SW and will be open to the general public.

"Curative is proud to partner with Pierce College and be a crucial resource for

the community during this pandemic," said Fred Turner, CEO and co-founder of Curative. "Curative's goal is to make testing more accessible with our easy COVID-19 testing site. We offer a simple testing option with results delivered directly 1-2 days upon receipt at our labs and at no out-of-pocket cost to patients."

Curative offers shallow nasal PCR testing for COVID-19. Once the patient completes the test, the patient seals their test within a secure container and returns it to be processed in the lab. The sample collection process can be

viewed at <https://youtu.be/lvUw-FDCyHE>.

"We're happy to provide a convenient location for students, employees, and the general public to get tested as we all work together to end this pandemic," said Pierce College Fort Steilacoom President Julie White, Ph.D. "We're proud to collaborate with Curative to increase accessibility to COVID-19 testing in our community."

Appointments are required, and can be booked in advance by visiting www.curative.com. ■

→ → See map for on-site COVID-19 testing booth location at our Fort Steilacoom campus → → → →

VISIT THE PIERCE COLLEGE SCIENCE DOME TODAY!



Explore the night sky, fly through the solar system, explore the universe, and learn about new astronomical discoveries at the Pierce College Science Dome! Pierce College Fort Steilacoom's 58-seat digital planetarium is the only one of its kind in the South Puget Sound region.

This immersive and interactive facility allows visitors to view the night sky from anywhere in the known universe on a cloudy day, and be immersed in an alien environment with breathtaking full-dome images.

The Science Dome offers public shows on Fridays and Saturdays, which include a 30-minute night sky tour, and a 30-minute full-dome video. For our full schedule of events and to purchase tickets, visit www.pierce.ctc.edu/dome-shows.

The Science Dome is also offering both virtual and in-person private shows and field trips. To plan your group visit, please see our website at www.pierce.ctc.edu/science-dome-group-visits. ■

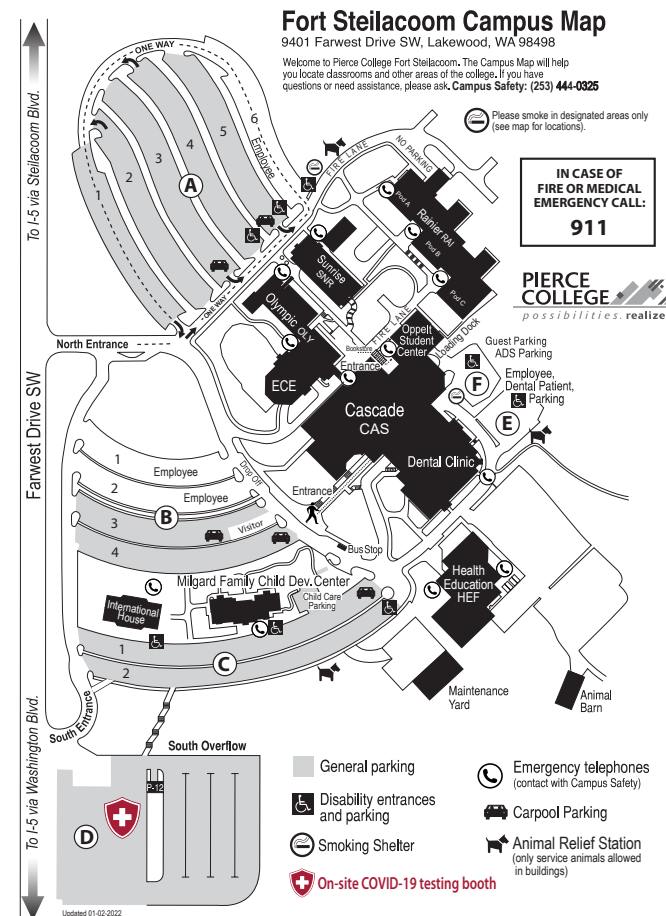
NASA SPACE GRANT FIELD TRIP

Experience science at Pierce College through this unique visit opportunity! Bring your class or club to campus.

The NASA Space Grant Field Trip is open to middle and high school groups only.

The visit includes:

- 1 hour Science Dome presentation (free admission)
- 30 minute Pierce College campus tour
- 30 minute college workshop with an engaging STEAM activity and Q&A/trivia session with current Pierce College students
- Coverage of transportation costs via school bus (if needed) for your visit. (The bus will be paid for, but not provided.)



SCIENCE DOME

Booking information:

Visit bit.ly/PierceCollegeScienceDomeNASA

Contact:

Hillary Stephens 253-964-6440, hstephens@pierce.ctc.edu

piercecollegedome.com

Due to the ongoing covid-19 pandemic we are limited to 30 participants (students + chaperones) at a time. However, if your group is larger than this you can split into two groups.

Pierce Points of Pride



Pierce College District has been named one of the top 10 best community colleges in the nation since 2018 for the Aspen Prize for Community College Excellence.



Pierce College Fort Steilacoom was named a Rising Star for the 2019 Aspen Prize for Community College Excellence, the nation's signature recognition of high achievement and performance among community colleges.



Pierce College has received the LEAH MEYER AUSTIN AWARD – the highest distinction a college in the Achieving the Dream network can earn.



2-YEAR COLLEGE IN THE NATION Rated for Veterans by the Military Times

94%

PIERCE COLLEGE HAS INCREASED ITS GRADUATION RATE BY 94% OVER THE LAST EIGHT ACADEMIC YEARS

68%

FIRST-GENERATION COLLEGE STUDENTS

15

AVERAGE CLASS SIZE

TUITION COMPARISON



13,520

PIERCE COLLEGE IS THE LARGEST COLLEGE IN PIERCE COUNTY, SERVING MORE THAN 13,520 STUDENTS ANNUALLY.



PATHWAYS FOR SUCCESS

Pierce College was selected as one of five colleges in the state*, and one of 30 in the nation**, to implement Guided Pathways. Guided Pathways simplifies course choices, helping students make the most efficient use of their time and money.

Programs

UNIVERSITY TRANSFER DEGREES

If your goal is a bachelor's degree or beyond, it makes sense to attend Pierce College for your first two years. You'll pay a fraction of the cost for the same education and enjoy small class sizes and hands-on learning.

Associate in Arts (AA-DTA)
Associate in Science (AS-T)
<div><div></div><div>AS-T Track 1 for science pre-majors in biological sciences, chemistry, environmental/resource sciences, geology and earth science</div></div> <div><div></div><div>AS-T Track 2 for science pre-majors in engineering, computer science, physics and atmospheric sciences</div></div>
Associate in Biology (DTA/MRP)
Associate in Business (DTA/MRP)
Associate in Construction Management (DTA/MRP)
Associate in Math Education (DTA/MRP)
Associate in Music (DTA/MRP)
Associate in Pre-Nursing (DTA/MRP)

BACHELOR OF APPLIED SCIENCE DEGREES

Pierce College now offers the following five Bachelor of Applied Science degrees:

BAS in Applied Business Management** – The Bachelor in Applied Science in Applied Business Management (BAS-ABM) is a cohort-based, full-time, two-year program. With this affordable, convenient and quality baccalaureate degree, you gain 21st century technical, transferable and lifelong-learning skills employers demand.
BAS in Dental Hygiene** – This program enjoys national acclaim and recognition for consistently graduating clinically skilled and intellectually strong dental hygienists.
BAS in Fire Services Leadership and Management** – This professional development program trains existing fire service professionals to navigate the administrative, technical and operational demands of fire departments.
BAS in Homeland Security Emergency Management** – This online and hybrid program is part of a guided career pathway designed to prepare students to become 21st century emergency management professionals.
BAS in Teaching** – This degree leads to teacher licensure with dual endorsements in both P-3 education and P-3 special education. The program was designed with best practices in teacher preparation.

TRANSITIONAL EDUCATION

Whether you need to finish your high school diploma or learn English, Pierce College has a program to help you build your educational foundation.
Pierce College Adult Diploma (PCAD)
Basic Education for Adults (BEaA)
English as a Second Language (ESL)
General Education Development (GED)

PROFESSIONAL/TECHNICAL DEGREES AND CERTIFICATES

Pierce College's professional/technical degrees and certificates are designed to provide students with the technical and related skills needed for successful employment.

DEGREES	
Administrative Assistant Medical Office (AAS)	Health Informatics and Integrated Technology
Administrative Office Assistant Associate (AAS)	Homeland Security Emergency Management
Applied Accounting	Kinesiology*
Applied Business*	Medical Billing and Coding (AAS)
Computer Network Engineering	Military Technology and Leadership (AT)
Construction Management	Nursing (ADN)**
Criminal Justice	Occupational Safety and Health Technician^*
Database Management and Design	Office Management (AAS)
Digital Design	Paraeducation
Early Childhood Education*	Physical Therapist Assistant^^++
Emergency Medical Services	Social Service/Mental Health
Fire Services Leadership and Management+*	Veterinary Technology**
CERTIFICATES	
Accounting Office Assistant	Personal Training
Accounting Technology	Project Management
Administrative Assistant Medical Office	Sales
Administrative Office Assistant	Short Project Management
Application Development	Small Business
Bookkeeping Office Assistant	Social Media and Marketing
Business	Social Service/Mental Health
Business Analysis	State Early Childhood Education Certificate
Business Technology (IBEST)	State Initial Early Childhood Education
Computer Systems Administration	State Initial Paraeducation
Construction Management	State Paraeducation
Construction Safety Technician^	State Short Early Childhood Certificate of Specialization - Administration
Crime Analysis and Investigations	State Short Early Childhood Certificate of Specialization - Family Child Care
Criminal Justice	State Short Early Childhood Certificate of Specialization - General
Emergency Medical Services	State Short Early Childhood Education Certificate of Specialization - Home Visitor/Family
Emergency Medical Technician	State Short Early Childhood Certificate of Specialization - Infants and Toddlers
Entrepreneurship	State Short Early Childhood Certificate of Specialization - School Age Care
Explorer/Cadet Pre-Law Enforcement	Supervision and Management
Fitness Coach	Tribal Homeland Security Emergency Management
Forensic Technology	Virtual Design and Construction for Construction Management
Healthcare Database Management and Design	
Homeland Security Emergency Management	
Human Resource Management	
Medical Billing and Coding	
Microsoft Systems Administrator	
Network Infrastructure	

Services

ACCESS AND DISABILITY SERVICES

253-964-6468
www.pierce.ctc.edu/ads
If you are a student with disabilities, you can access accommodations and support as well as educational planning, advising, assistive technology and learning strategies.

eLEARNING

253-964-6244
www.pierce.ctc.edu/elearning
Using technology, eLearning allows you the freedom, flexibility and control to earn a certificate or degree on your own schedule.

EDI CARES

253-912-2264
FS: 253-912-3659 | **PY:** 253-840-8487
www.pierce.ctc.edu/edi
f @PierceCollegeEDICARES
📷 @edicarespiercecollege

The EDI CARES (Equity, Diversity and Inclusion, College Access, Retention, and Engagement Services) office is a brave space focused on empowering all Pierce College students to achieve their academic, professional, and life goals. We provide one-to-one personalized coaching and mentorship, degree and educational planning, assistance with navigating college life, financial aid, scholarships, as well as student life events, activities and leadership opportunities. The programs included in EDI CARES are:

- **ASPIRE-** ASPIRE aims to improve enrollment, retention and completion rates of underrepresented Asian American, Pacific Islander and low-income students.
- **TRiO Student Support Services-** The TRiO programs at Pierce College Fort Steilacoom provides extra support and assist students in transferring to four-year colleges or universities.
- **Student Life and Engagement,** Student Government, student activities and clubs.
- **Our cultural affinity programs** include LINK (Legacy of Indigenous Native Knowledge), James Baldwin's Scholars: Black/ African and African American, LATINE/LATINX , and LGBTQIA+/Queer people of color. Please fill out this interest form to begin the entry process into EDI CARES: **bit.ly/edicaresapp**

INTERNATIONAL EDUCATION

253-964-6229
www.pierce.ctc.edu/ie
Students from around the world can earn degrees at Pierce College while strengthening their English skills, exploring American culture, and sharing their own culture with local students. In addition, American students can take advantage of Pierce's opportunities to study abroad.

JOB AND CAREER CONNECTIONS

253-964-6265
www.pierce.ctc.edu/workforce-connections
Resources for students, alumni, staff and community members to explore career options, education pathways and connect with internships and employment.

MILITARY EDUCATION

Fort Lewis: 253-964-6567
McChord: 253-964-6606
www.pierce.ctc.edu/jblm
Two education centers at Joint Base Lewis-McChord offer accelerated programs open to active-duty military personnel, their family members, VA benefit recipients and civilians.

RUNNING START

FS: 253-964-6705 | **PY:** 253-840-8431
www.pierce.ctc.edu/running-start
Academically qualified high school juniors and seniors can take college-level courses at Pierce College, earning both high school and college credit tuition-free.

TUTORING

FS: 253-964-6737 | **PY:** 253-864-3258
www.pierce.ctc.edu/tutoring
Pierce College offers a variety of academic support services to meet individual needs of students.

VETERANS SERVICES

FS: 253-964-6505 | **PY:** 253-864-3194
www.pierce.ctc.edu/veterans
Specialized staff at both campuses are here to help veterans through the process of receiving VA Education Benefits. The Veterans Resource Center at Pierce College Fort Steilacoom has a textbook lending library, study areas, computers and a comfortable space for meeting other student veterans and learning about local resources.

WORKFORCE

253-964-6265
www.pierce.ctc.edu/workforce
Workforce programs help you reach new career goals by finding the program that works for you and your family, giving you the support you need to succeed.

COLLABORATIONS



Interested in transferring to University of Washington Tacoma? Contact Maria Reyes at Mreyes@pierce.ctc.edu or 253-912-2399 x5593 for help.



Central Washington University operates an extension site at Pierce College Fort Steilacoom, allowing students to earn bachelor's degrees in Lakewood.



Invista Performance Solutions is a workforce training resource that provides customized, targeted employee training for businesses.

* Applied Science – Transfer Degree (AAS-T)
** Special admissions procedures apply
^ Collaboration with Edmonds Community College

^^ Collaboration with Whatcom Community College
+ Collaboration with the Tacoma Fire Department
++ Associate in Science (AS)

PERSONAL ENRICHMENT



HOT CLASSES
This class is HOT!
Register early!



SUPPLY FEE
Supply fees apply to some classes, payable to the instructor on the first day of class. Cash only, please.

Art & Creativity

Request a supply list by emailing
ce-questions@pierce.ctc.edu.

Beginning/Intermediate Drawing

If you're interested in breaking out that sketchpad and pencil kit and immersing yourself in the medium—perhaps as a new creative outlet, a way to unwind, or to continue to sharpen your artistic craft—taking this drawing class is a step in the right direction. You will learn the basics, like how to draw from observation, line quality, shading methods and many other drawing techniques.

VIRTUAL Fee: \$129
Tuesday 6-7:30 p.m.
Ward 5 sessions: April 12 to May 10

Painting Watercolors: Flowers

In this fun, fresh class, learn to paint spring flowers in watercolor. You'll learn two styles – one loose and flowing and the other using fine detail. While painting you'll learn washes, wet-on-wet, underpainting, color blending, layering, dry brush, color lifting and more.

VIRTUAL Fee: \$139
Thursday 6-8 p.m.
Ward 5 sessions: April 14 to May 12

NEW! Weekend Watercolor Notecards: Flowers

Spring has arrived, so come and create some beautiful hand-painted watercolor cards to share with friends and family! These fun cards don't take long as we'll paint lovely flowing watercolor washes using vibrant colors to represent the emerging colors of spring.

IN PERSON PUY AAH 236 Fee: \$59
Saturday 9 a.m. to noon
Ward 1 session: April 23

NEW! Weekend Watercolor Notecards: Butterflies

In this fun Saturday workshop, you'll learn step by step how to paint beautiful watercolor butterflies. Flowing bright watercolor washes are perfect for these one-of-a-kind cards.

VIRTUAL Fee: \$59
Saturday 9 a.m. to noon
Ward 1 session: April 30

COME Zoom WITH US!

Courses marked VIRTUAL are conducted via Zoom. It's fun and easy!
No account or password required. Just click your assigned link to connect with your instructor and their virtual classroom.

QUESTIONS? Email CE-Questions@pierce.ctc.edu, Register by phone at 253-864-3330

Body, Spirit, Mind & Soul

Developing Your Intuition Using Astrology and Tarot

Develop and understand your own intuitive powers. Please first have a basic understanding of the tarot. We'll study cycles and trends in your life, how to work with daily transits using the monthly calendar, compatibility charts, celebrity charts and your solar returns for the year. Bring your favorite tarot deck to class.

IN PERSON FS OLY 203 Fee: \$119
Thursday 7-9 p.m.
Tognett 7 sessions: April 14 to May 26

Tai Chi - Beginning

Designed to accommodate the beginner. Emphasis will be placed on establishing a solid foundation of fundamentals. You will enhance internal strength and energy while improving your balance, vitality, and stamina. Relieve inner stress and help calm the mind. No class May 7.

IN PERSON PUY CTR 102 Fee: \$119
Saturday 9-10 a.m.
Llanos 8 sessions: April 16 to June 11

Tai Chi - Intermediate

For students who have taken Beginner's Tai Chi. We'll review Section 1A of the Yang Family Long Form moving into Section 1B (completing the form) and into a deeper understanding of breath and movement while following the classics of Tai Chi. No class May 7.

IN PERSON PUY CTR 102 Fee: \$119
Saturday 10:15-11:15 a.m.
Llanos 8 sessions: April 16 to June 11

Tai Chi - Advanced

For students who have taken both Beginner and Intermediate classes. Course content reviews form refinements on Sections 1 and 2 and moving into Section 3 and 4. We will also study the Classics and Martial aspects of the form. No class May 7.

IN PERSON PUY CTR 102 Fee: \$119
Saturday 11:30 a.m. to 12:30 p.m.
Llanos 8 sessions: April 16 to June 11

Stay Active and Independent for Life (SAIL) Program Leader Training

If you are a health, fitness, nursing or senior care professional, join our online SAIL program. Get the training you need to lead SAIL exercise sessions to assist older adults to improve strength, balance and increasing their ability to perform daily tasks. Continuing Education Units (CEUs) are included in the course fee.

ONLINE April 4 to June 17 Fee: \$299

Career & Trade Skills

Learn CATIA at Pierce College

CATIA V5® is the most prevalent CAD/CAM system used in the aerospace and automotive industries. Give yourself an edge in hiring and promotions by learning it! We offer CATIA V5 and the newer CATIA 3DEXperience. We currently offer online instruction or instructor-led, in-person versions of all courses. Company payments and Boeing vouchers are accepted. Contact us at ce-questions@pierce.ctc.edu or 253-840-8451 for more information or to download a sample of our simulation training to see how the program works.

Flagging

Certified flaggers are responsible for worker and public safety during road construction, utility work and maintenance operations. Students earn a flagger certification card, which is valid for three years in Washington, Oregon, Idaho and Montana. Students must be at least 18 years old. There is an open-book test at the end of class in which you must have a passing score of 80 percent in order to receive your certification. Book included in course fee. Bring a sack lunch.

IN PERSON PUY LSC 128 Fee: \$79
Saturday 9 a.m. to 4 p.m.
Pollard 1 session: March 12

IN PERSON PUY LSC 128 Fee: \$79
Saturday 9 a.m. to 4 p.m.
Pollard 1 session: April 16

IN PERSON PUY LSC 128 Fee: \$79
Saturday 9 a.m. to 4 p.m.
Pollard 1 session: May 21

Home & Garden

NEW! Create Your Own Pollinator Garden

Learn how you can create a gorgeous, easy care garden with increased fruits and vegetable yields while attracting pollinators-butterflies, hummingbirds, bees and other beneficial insects. We will also discuss how to create micro-prairies using native grasses and flowers and other sustainable habitat areas and survival elements. Students will learn which native bees (mason, leaf cutter and beneficial), hummingbirds and butterflies are local to our area. Class includes a handout and an eBook.

VIRTUAL Fee: \$39
Saturday 10-11:30 a.m.
Bailey 1 session: June 4

To register online, go to:

www.PierceCE.com

Explore

NEW! Dinosaurs of the Wyoming Dinosaur Center

The Wyoming Dinosaur Center Museum is one of the best paleontology museums in North America. Its collection of pre-dinosaur fossils are world class. If you love dinosaurs and can't get to Thermopolis, Wyoming then this class is for you.

VIRTUAL Fee: \$29
Monday 6:30-7:30 p.m.
Kaynor 1 session: April 25

NEW! Geology of Mt. Rainier and Newberry Volcano

This 2-hour slide presentation highlights the geology of Mount Rainier and Newberry Volcano, our 2 largest volcanos in the Pacific Northwest. The first is the most iconic volcano in the lower 48 and the other has by far the largest footprint of any volcano in North America. This class shows that all volcanos are not the same.

VIRTUAL Fee: \$39
Wednesday 6:30-8:30 p.m.
Kaynor 1 session: June 1

NEW! Common and Uncommon Birds of Western Washington

This 2-hour slide presentation highlights 60 common and uncommon birds found in Western Washington with lots of fun facts about each bird shown. A great course for beginning and intermediate birders! David Kaynor has been an avid birder for over 30 years.

VIRTUAL Fee: \$39
Wednesday 6:30-8:30 p.m.
Kaynor 1 session: May 4

NEW! Your First Garden

Join Horticulturist Kerri Bailey as she shares 20+ years' experience as an organic gardener and nursery veteran. We will focus on selecting plants, basic landscape design principles as well as seasonal plant care & garden techniques geared for the PNW-garden. Plus, tools, proper planting/transplanting, watering, pruning, soils & mulches, fertilizers, pesticides, weeding concepts. Class includes a handout & eBook.

VIRTUAL Fee: \$39
Saturday 10-11:30 a.m.
Bailey 1 session: April 16

NEW! Kitchen Medicinal Garden

There is nothing like the taste of fresh herbs and flowers straight from the garden! Learn how to create and care for your own organic herb and medicinal garden for cooking, preserving, and making amazing tea beverages and spice blends. Class includes a handout and an eBook.

VIRTUAL Fee: \$39
Saturday 10-11:30 a.m.
Bailey 1 session: May 28

NEW! Low Maintenance, Low Cost Landscaping

Our lives may be busy and hectic, leaving little time for busy outdoor chores. Learn tricks and tips to create and maintain a low maintenance gorgeous garden or yard even on a budget. We will cover easy-to-care for plants, containers & raised beds, hardscapes, weed control methods and other low maintenance garden and yard ideas. Class includes a handout & eBook.

VIRTUAL Fee: \$39
Saturday 10-11:30 a.m.
Bailey 1 session: April 30

NEW! Small Space Gardens

Make the most out your small green space. Learn how to make every square inch count while thinking outside-the-box, even vertically. We will discuss container growing, patio trees, compact & narrow plants, green fences and creating cozy garden rooms for a useful, edible and fragrant green space. Class includes a handout & eBook.

VIRTUAL Fee: \$39
Saturday 10 a.m. to 11:30 p.m.
Bailey 1 session: May 14

Home Canning for Beginners

You will become familiar with canning equipment and how to safely can for your pantry. Home canning is great for special diets, saving money on your food budget and providing good, wholesome food for you and your family. Hands-on project will include making a batch of home-made jam. SUPPLY FEE: \$5 cash to instructor.

IN PERSON PUY CDP Fee: \$39
Saturday 10 a.m. to noon
Basquez 1 session: May 14

Pressure Canning for Beginners

Do you have a pressure canner and are scared to use it? This class will help you feel comfortable using your pressure canner to home can meats and vegetables for your pantry. In this hands-on class you will get to see the canner used from start to finish and take home a jar of home-canned goodness. SUPPLY FEE: \$5 cash to instructor.

IN PERSON PUY CDP Fee: \$39
Saturday 10 a.m. to noon
Basquez 1 session: April 30

Spring Flower Arranging

Learn how to design flower arrangements from popular instructor, Marilee Johnson! You will learn about the most common flower varieties, the latest techniques for the care and handling of flowers, where and how to buy wholesale flowers and more. Each class you will take home a beautiful arrangement. Please bring wire cutters, florist clippers, florist knife and scissors.

IN PERSON PUY LSC 150 Fee: \$229
Thursday 6-8 p.m.
Johnson 4 sessions: May 12 to June 2

NEW! **Food Dehydration for Beginners**
This class will be an introduction to food dehydrating. Learn how to prep your food to achieve the best results of dehydrating your food. This is a great way to preserve your harvest or local farmer's market purchases for your pantry. This class will help you use one of the oldest food preservation methods known to man. We'll discuss methods of drying, selecting the correct dehydrator for your use and proper storage once your product is dehydrated. Food samples will be available to taste.

IN PERSON **PUY CDP** **Fee: \$39**
Saturday **10 a.m. to noon**
Basquez **1 session: April 16**

Music & Voice

Introduction to Voiceovers: Getting Started in Voice Acting
"Wow, you have a great voice!" Have you heard that more times than you can count? If so, you could have what it takes to begin working as a professional voiceover artist. This course is offered as a 90-minute virtual video chat where you will receive one-on-one instruction. After registration, please email ce-questions@pierce.ctc.edu to schedule your one-on-one chat today!

VIRTUAL **Fee: \$69**
Arranged **90 min.**
VFA **1 session: Virtual**

Beginning Guitar

Come learn how to play your guitar quickly and easily in this fun course. You will learn the basics of reading music, how to hold and use a pick, tuning, chords, finger numbers, hand position, strum patterns and more. You'll also learn several songs, all with different styles and techniques. Please bring a functioning guitar and pick to class. **SUPPLY FEE: \$10**

IN PERSON **PUY AAH 102** **Fee: \$109**
Wednesday **5:30-7 p.m.**
Herring **5 sessions: April 13 to May 11**

Songwriting

We'll study word composition and phrasing, song arrangement, chord progressions as well as continuity of theme. Includes exercises in word phrasing, rhyme and poetry. You will also have the chance to share your individual ideas while forming your own songs! Ann Herring is an award winning songwriter who with her band at one time toured with Johnny Cash, Rodney Crowell, and Emmy Lou Harris.

IN PERSON **PUY AAH 203** **Fee: \$109**
Monday **5:30-7 p.m.**
Herring **4 sessions: April 11 to May 2**

Language

Beginning Conversational Spanish

The best way to learn a language is through conversation. In this fun and relaxed beginning level course, you'll learn conversation skills virtually plus some basics phrases and more!

VIRTUAL **Fee: \$119**
Tuesday **6:30-8 p.m.**
Palacios **6 sessions: April 12 to May 17**

To register online, go to:
www.PierceCE.com

NEW! Beginning Conversational Spanish - Level II

Taking "Beginning Conversational Spanish" before taking this class is advised. In this class, we will continue adding vocabulary, and introducing basic verbs and forming sentences.

VIRTUAL **Fee: \$119**
Thursday **6:30-8 p.m.**
Palacios **6 sessions: April 14 to May 19**

Personal Planning & Finance

Health Care and Your Retirement

The potential impact of rising health care costs on retirement savings. Includes an introduction to Medicare coverage, costs, long-term care costs, available options for supplemental health care and long-term care insurance.

IN PERSON **PUY ADM 137** **Fee: \$29**
Wednesday **6-8 p.m.**
Loe **1 session: April 20**

How to Prepare Financially for the Unexpected

How to develop a proactive strategy for protection and preparing for the unexpected. Strategies include having an emergency fund, establish a line of credit, and review insurance/liability protection.

IN PERSON **PUY ADM 137** **Fee: \$29**
Wednesday **6-8 p.m.**
Loe **1 session: May 18**

Social Security: Your Questions Answered

This popular, recurring workshop will teach you ways to maximize Social Security benefit amounts for yourself and your spouse based on age, life expectancy, employment and need. Plenty of time for questions and answers.

IN PERSON **PUY ADM 137** **Fee: \$29**
Wednesday **6-7:30 p.m.**
Loe **1 session: June 1**

Planning for Your End of Life

Spring into action and plan for your future. Learn how to put your will, final papers, and end-of-life information in order. Topics include important documents to have on file, helpful information for loved ones, and ideas for leaving a lasting memory. A checklist to follow and a resource list will be provided.

VIRTUAL **Fee: \$39**
Wednesday **6-8 p.m.**
Holmstrom **1 session: April 13**

JOB SKILLS

NONCREDIT ONLINE

ACCOUNTING

Accounting Fundamentals I
Accounting Fundamentals II
Crystal Reports
Performing Payroll in QuickBooks
Purchasing Fundamentals
QuickBooks

BUSINESS, OFFICE AND SALES

Administrative Assistant Applications
Administrative Assistant Fundamentals
Effective Selling
High Performance Organization
High Speed Project Management
Introduction to Business Analysis
Keyboarding
Mastery of Business Fundamentals
Professional Sales Skills
Sales Training
Talent and Performance Management
Total Quality Fundamentals
Using Social Media in Business

BUSINESS WRITING

Business and Marketing Writing
Effective Business Writing
Fundamentals of Technical Writing
How to Make Money from Your Writing
Introduction to Internet Writing Markets
Research Methods for Writers
Resume Writing Workshop
The Craft of Magazine Writing
The Keys to Effective Editing
Write Effective Web Content
Writing and Editing

COMMUNICATIONS

Achieving Success with Difficult People
Individual Excellence
Interpersonal Communication
Keys to Effective Communication
Mastering Public Speaking
Presentation Skills
Skills for Making Great Decisions

COMPUTER PROGRAMMING

CSS3 and HTML5
C# Programming
C++ Programming
Java Programming
JavaScript
PHP and SQL
Python Programming
Visual Basic

ENTREPRENEURSHIP AND SMALL BUSINESS

Marketing Your Business on the Internet
Publish and Sell Your eBooks
Small Business Marketing on a Shoestring
Start and Operate Your Own Home-Based Business
Start Your Own Small Business
Starting a Consulting Practice

FINANCE AND INVESTING

Introduction to Stock Options
Keys to Successful Money Management
Personal Finance
Real Estate Investing
Stock Trading
Stocks, Bonds and Investing: Oh, My!
The Analysis and Valuation of Stocks
Where Does All My Money Go?

GRANT WRITING AND NONPROFIT

Get Grants!
Grant Proposal Writing
Grant Writing A to Z I
Grant Writing A to Z II
Marketing Your Nonprofit
Nonprofit Fundraising
Nonprofit Management
Starting a Nonprofit

GRAPHIC AND WEB DESIGN

Adobe Acrobat
Adobe Illustrator
Adobe InDesign
Adobe Lightroom
Adobe Photoshop
Creating Web Pages
Creating WordPress Websites
Designing Effective Websites
Dreamweaver
Web Design

LANGUAGE

Conversational French, Beginning
Conversational Japanese
Discover Sign Language
Instant Italian
Speed Spanish
Speed Spanish II
Speed Spanish III
Spanish for Law Enforcement
Spanish for Medical Professionals
Spanish for Medical Professionals II

Six-week courses start:

MARCH	APRIL	MAY	JUNE
16	13	18	15

Most six-week courses
ONLY \$119!

MANAGEMENT AND LAW

Building Teams That Work
Creating a Successful Business Plan
Employment Law Fundamentals
Leadership
Managing Customer Service
Supervision and Management
Understanding the Human Resources Function
Workers' Compensation
Workplace Law Essentials

PERSONAL COMPUTERS

Computer Skills for the Workplace
Microsoft Access
Microsoft Excel
Microsoft Outlook
Microsoft PowerPoint
Microsoft Project
Microsoft Publisher
Microsoft Windows
Microsoft Word
PC Security
PC Troubleshooting
Understanding the Cloud

TEST PREP

GED Prep
GMAT Prep
GRE Prep I and II
LSAT Prep
Praxis Prep
SAT/ACT Prep

IT TEST PREP

CompTIA A+ Certification Prep (Basic)
CompTIA A+ Certification Prep (Intermediate)
CompTIA A+ Certification Prep (Advanced)
CompTIA Network+ Certification Prep
LPI Linux Essentials Exam Prep

For detailed course descriptions, pricing, even more classes and to register, go to:

Professional.PierceCE.com

CAREER PROGRAMS
NONCREDIT ONLINE

START ANY TIME
Get industry certified in 6 months to a year!

ARE YOUR UNEMPLOYMENT BENEFITS RUNNING OUT?

If you are currently receiving WA unemployment benefits you might be eligible for special funding. All courses listed here are approved for funding. Find more approved courses on Career Bridge at CareerBridge.wa.gov

- Some programs qualify for WorkSource/WIOA funding. Call 253-840-8451 for assistance.
- Some programs qualify for Trade Adjustment Act (TAA) funding.
- **Employer payments and company vouchers** are accepted for these courses. Call 253-840-8451 for more information.
- Approved for **MyCAA military spouse funding** (\$4,000 per person)
- Under the **Fee Installment Plan**, you can make up to three interest-free payments. Contact cashiering at cashiering@pierce.ctc.edu or 253-964-6700.

Administrative

Certified Administrative Professional
6 months, 90 hours, \$1,695
(Exam voucher included)

Executive Assistant
12 months, 450 hours, \$3,595
(Exam voucher included)

Administrative Medical

Medical Billing and Coding
12 months, 70 hours, \$2,995
(Exam voucher included)

Certified Outpatient Coder
6 months, 200 hours, \$2,895

ICD-10 Medical Coding
6 months, 200 hours, \$1,795

Administrative Dental Assistant
6 months, 150 hours, \$1,795

Advanced Hospital Coding and CCS Prep
6 months, 100 hours, \$1,895
(Exam voucher included)

Certified Risk Adjustment Coder
6 months, 160 hours, \$1,495
(Exam voucher included)

Certified Electronic Health Records Specialist and Medical Terminology
12 months, 354 hours, \$2,495
(Exam voucher included)



Certified Health Unit Coordinator
6 months, 120 hours, \$1,495
(Exam voucher included)

Certified Medical Administrative Assistant
6 months, 160 hours, \$1,495
(Exam voucher included)

Medical Interpreter (Spanish/English)
9 months, 200 hours, \$2,395

Certified Professional Medical Auditor
6 months, 80 hours, \$1,695
(Exam voucher included)

Medical Office Manager
18 months, 555 hours, \$3,995
(Exam vouchers included)

Business

Advertising and Outreach Specialist
6 months, 100 hours, \$1,295

Business Coach
6 months, 100 hours, \$1,295

Call Center Manager
6 months, 55 hours, \$2,995

Certified Global Business Professional
12 months, 160 hours, \$2,495

Certified Credit Counselor
6 months, 80 hours, \$1,995
(Exam voucher included)

Certified Internal Auditor
18 months, 300 hours, \$695

Entrepreneurship: Start-Up and Business Owner Management
6 months, 200 hours, \$2,495
(Exam voucher included)

Certified Paralegal
12 months, 225 hours, \$4,495
(Exam voucher included)

Grant Writing Certificate
6 months, 300 hours, \$2,295

Human Resources Professional
6 months, 120 hours, \$1,795

Lean Six Sigma Green Belt and Black Belt
12 months, 125 hours, \$2,295
(Exam vouchers included)

PMI Risk Management Professional
6 months, 50 hours, \$695

Professional Interpreter
6 months, 40 hours, \$995



Design and Art

Adobe Certified Associate
12 months 220 hours, \$2,595
(5 Exam vouchers included)

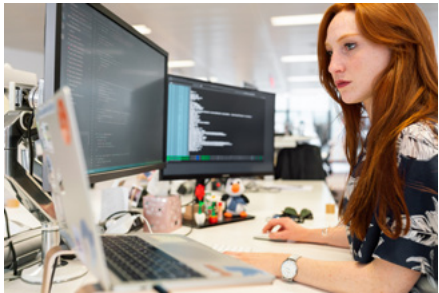
Digital Game Artist Certificate
18 months, 600 hours, \$2,595

Graphic Design with Photoshop
9 months, 130 hours, \$1,995

Marketing Design Certificate
12 months, 360 hours, \$3,295

Multimedia Arts Certificate
12 months, 360 hours, \$3,295

Web Design Professional
12 months, 384 hours, \$2,995



Information Technology

Certified Ethical Hacker
6 months, 100 hours, \$2,895
(Exam voucher included)

CompTIA IT Fundamentals
6 months, 100 hours, \$895
(Exam voucher included)

Help Desk Analyst Tier 1 Support Specialist
6 months, 120 hours, \$1,495

Management for IT Professionals
6 months, 390 hours, \$2,295

Supply Chain

Certified Green Supply Chain Professional
13 months, 60 hours, \$1,595



Freight Broker/Agent Training
6 months, 180 hours, \$1,895

Senior Certified Sustainability Professional
12 months, 110 hours, \$2,495



For detailed course descriptions, pricing, even more classes and to register, go to:

Career.PierceCE.com

PLEASE NOTE: *Pierce College recommends that you check with your school district and/or state licensing agency to verify these course offerings will meet your district and/or state requirements for salary advancement and/or state certificate re-licensure. No refunds are given once you have been issued your username and password information.*

GET YOUR CLOCK HOURS *One year access, start anytime!*

45 Clock Hours, Fee: \$299 Educators.PierceCE.com

Behavior is Language	English Language Learner: Linguistics	Teaching Secondary Math Conceptually
Early Childhood: Observation & Assessment	English Language Learner: Methods and Materials	Try DI!
Early Childhood: Program Planning	Learning Disabilities	Understanding & Implementing Common Core Standards
Early Childhood: Typical & Atypical Development	Reading Fundamentals #3: The Elements of Effective Reading Instruction & Assessment	Understanding Aggression
English Language Learner: Evaluations & Assessment	Response to Intervention (RTI)	Why DI? – An Introduction to Differentiated Instruction
English Language Learner: Language Acquisition		

30 Clock Hours, Fee: \$244 Educators.PierceCE.com

Advanced Classroom Management: Children as Change Agents	Educational Assessment	Reading Fundamentals #2: Laying the Foundation for Effective Reading Instruction
Attention Deficit/Hyperactivity Disorder (ADHD)	Harassment, Bullying & Cyber-Intimidation in Schools	Six Traits of Writing Model: Teaching and Assessing
Autism & Asperger's Disorder	Inclusion	Talented & Gifted: Working with High Achievers
Build School Communities: Brain Smart Classroom Management	Infant & Toddler Mental Health	Teaching Diversity
Child Abuse	Reading & Writing in Content Area	Teaching Elementary Math Conceptually
Drugs & Alcohol in Schools	Reading Fundamentals #1: An Introduction to Scientifically-based Research	Traumatized Child
Early Childhood: Family-Centered Services		Violence in Schools

24 Clock Hours, Fee: \$139 SIX-WEEK CLASSES Teachers.PierceCE.com

Six-week courses start:
6-week access/24 course hours

	MARCH 16	APRIL 13	MAY 18	JUNE 15	
Common Core Standards in English K-5					Singapore Math Strategies: Advanced Model Drawing for Grades 6-9
Content Literacy: Grades 6-12					Solving Classroom Discipline Problems
Creating Classroom Centers					Solving Classroom Discipline Problems II
Creating a Classroom Website					Spanish in the Classroom
Creating the Inclusive Classroom: Strategies for Success					Survival Kit for New Teachers
The Creative Classroom					Teaching Adult Learners
Differentiating K-12 Assessments					Teaching High School
Empowering Students with Disabilities					Teaching Math: Grades 4-6
Enhancing Language Development in Childhood					Teaching Preschool: A Year of Inspiring Lessons
Get Assertive!					Teaching Science: Grades 4-6
Grammar for ESL					Teaching Smarter with SMART Boards
					Teaching Writing: Grades K-3
					Teaching Writing: Grades 4-6
					Understanding Adolescents
					Using the Internet in the Classroom
					Writing for ESL

***P-12 CLOCK HOURS:** *The Pierce College Community and Continuing Education department is an approved OSPI (Office of the Superintendent of Public Instruction) clock hour provider.*

PIERCE COLLEGE
AT SPANAWAY

YOUR NEIGHBORHOOD COLLEGE
Located at
Graham-Kapowsin High School and
Spanaway Lake High School
www.pierce.ctc.edu/your-neighborhood-college

PIERCE COLLEGE
AT GRAHAM

Pierce College offers bachelor's degrees, associate degrees, and professional certificates in numerous programs of study (www.pierce.ctc.edu/). Career training opportunities prepare students for work in the fields like business, computers and technology, health care, communications and education. The college also offers adult basic education classes, English as a second language (ESL) classes, and community and continuing education classes.

Pierce College welcomes all students. Advisors (www.pierce.ctc.edu/advising) help resolve issues, answer questions, and provide information about the next best steps based on each individual's needs. The college ensures that the lack of English language skills is not a barrier to education, access to services, or activities.

Pierce College supports and values the dignity of each member of its community and visitors, and is committed to maintaining an environment free from discrimination and harassment. This commitment applies to all levels and areas of operations and programs and is intended to ensure that all students and employees are provided equitable opportunities to realize their goals and to function safely and effectively within the Pierce College environment.

Pierce College recognizes its responsibility under state laws and their implementing regulations to investigate, resolve, implement corrective measures, and monitor the educational environment and workplace to stop, remediate, and prevent discrimination on the basis of race, color, national origin, age, perceived or actual physical or mental disability, pregnancy, genetic information, sex, sexual orientation, gender identity, marital status, creed, religion, honorably discharged veteran or military status, or use of a trained guide dog or service animal. Pierce College prohibits discrimination against and harassment of members of these protected classes, as well as any additional class(es) protected by local, state, or federal law. Any individual found to be in violation of this policy will be subject to disciplinary action up to and including the possibility of exclusion from Pierce College facilities, dismissal from Pierce College as a student, and/or dismissal from employment, as applicable.

Members of the college community, guests, or visitors who believe they have been the subject of discrimination or harassment should report the incident or incidents to the District Title IX/EEO Coordinator identified below. If the complaint is against that Coordinator, or if for some other reason a report cannot be made to the Coordinator, the complainant should report the matter to one of the alternate designees listed below.

District Title IX/EEO Coordinator
Holly Gorski
Pierce College Fort Steilacoom
Cascade Building, Room 207
9401 Farwest Drive SW
Lakewood, WA 98498-1999
253-964-6519 | HGorski@pierce.ctc.edu

District Section 504 Coordinator
Tami Jacobs
Pierce College Fort Steilacoom
Cascade Building, Room 380
9401 Farwest Drive SW
Lakewood, WA 98498-1999
253-964-6581 | tjacobs@pierce.ctc.edu

District Affirmative Action Officer –
Paula Henson-Williams - 253-864-3229 -
phenson@pierce.ctc.edu

District Title IX Coordinator - Pierce College – Sean Cooke - 253-840-8472 - scooke@pierce.ctc.edu

Deputy Title IX Coordinator - District Athletics – Duncan Stevenson - 253-964-6612 - dstevenson@pierce.ctc.edu

Deputy Title IX Coordinator - Pierce College Puyallup – Agnes Steward - 253-840-8403 - asteward@pierce.ctc.edu

Deputy Title IX Coordinator - Pierce College Fort Steilacoom – Tami Jacobs - 253-964-6581 - tjacobs@pierce.ctc.edu

Deputy Title IX Coordinator - Pierce College at Joint Base Lewis-McChord – Kelly Benson – 253-964-6716 - kbenson@pierce.ctc.edu

Information on how to report concerns about behavior that may have a negative impact on the climate can be found at
www.pierce.ctc.edu/complaint-process. All reports of negative and inappropriate behaviors will be taken seriously. We believe that hearing about concerns presents an opportunity to consider any necessary improvements. Attempting to prevent someone from reporting a concern, and retaliating or attempting to encourage others to retaliate against someone who has raised concerns will not be tolerated.

Please also see our Discrimination and Harassment policy at www.pierce.ctc.edu/policy-discrimination-and-harassment

LIMITATION OF LIABILITY: The college's total liability for claims arising from a contractual relationship with the student in any way related to courses or programs shall be limited to the tuition and expenses paid by the student to the college for those courses or programs. In no event shall the college be liable for any special, indirect, incidental or consequential damages, including but not limited to loss of earnings or profits.

All students are advised that the Pierce College Marketing & Communications Office takes photographs and shoots videos throughout the year which may include images (as well as audio/video recordings of voices) of members of the student body and reserves the right to use them for publicity, promotional and marketing purposes. The College also reserves the right to take photographs of campus facilities and scenes, events, faculty, staff and students for promotional purposes in any areas on campus or at any Pierce College-sponsored event off campus where subjects do not have a normal and reasonable expectation of privacy. All such photographs and videos are defined as "Directory Information" and are the property of Pierce College and may be used for Pierce College promotional purposes (e.g. electronic and printed publications, websites, classroom use, college ads, etc.) without prior permission of the subjects.

As a general practice, there is no attempt to collect individual photo release forms from students. Instead, we make the assumption that Pierce College students are our best resources for marketing the College and that they will welcome involvement in these activities. However, students who do not wish to have their images/voices used for this purpose must stipulate this in writing to Marketing & Communications at the beginning of the quarter. It is also expected that such students will excuse themselves from photo/video sessions and inform the Pierce College photographer/videographer that they do not wish to be included.

CONTENT DISCLAIMER

Pierce College has made every reasonable effort to provide information that is accurate at the time of publication. However, the college reserves the right to make appropriate changes in policies, procedures, calendars, requirements, programs, courses and fees. When feasible, changes will be announced prior to their effective dates, but the college assumes no responsibility for giving any particular notice of any such changes. Nothing contained herein shall be construed to create any offer to contract or any contractual rights.

THE PIERCE COLLEGE LEADERSHIP TEAM

BOARD OF TRUSTEES
Brett Willis, Board Chair
Kristin Ray, Vice Chair
Clemencia Castro-Woolery
Therese Ngo Pasquier
Steve Smith

CHANCELLOR AND PRESIDENTS
Michele L. Johnson, Ph.D.
Chancellor and CEO
Julie A. White, Ph.D.
President, Pierce College Fort Steilacoom
Darrell L. Cain, Ph.D.
President, Pierce College Puyallup

DIRECTORY Visit www.pierce.ctc.edu or call

	FORT STEILACOOM	PUYALLUP
Information	253-964-6500	253-840-8400
Admissions	253-964-6501 www.pierce.ctc.edu/admissions	253-864-3254
Advising Center	253-964-6705 www.pierce.ctc.edu/advising	253-840-8431
Financial Aid	253-964-6544 www.pierce.ctc.edu/financial-aid	253-964-6544
Registration	253-964-6615 www.pierce.ctc.edu/register-and-pay	253-840-8413
Bookstore	253-964-6508 www.pierce.ctc.edu/bookstores	253-840-8411
Campus Safety	253-444-0325 www.pierce.ctc.edu/campus-safety	
Testing Center	253-964-6521 www.pierce.ctc.edu/testing-centers	253-840-8343

For directions, campus maps and building floor plans, visit: www.pierce.ctc.edu/maps

For parking permits, courtesy services, traffic/parking rules, student code of conduct, district policies and more, visit www.pierce.ctc.edu/campus-safety.

Postal Customer

Apply Now!

www.pierce.ctc.edu/get-started



SPRING TERM

Session 1 begins **April 4**
Session 2 begins **April 18**



**PIERCE
COLLEGE**

**LEADING THE
NATION
IN STUDENT
SUCCESS**



www.pierce.ctc.edu/pierce-college-leads-nation

BRING YOUR SPECIAL SKILL, KNOWLEDGE AND EXPERTISE TO THE COMMUNITY

Teach a class for Community and Continuing Education at Pierce College. We are looking for part-time/non-credit instructors. Classes offered evenings or Saturdays. Share your knowledge and talent while earning a paycheck.

QUALIFICATIONS:

- Experience with proposed subject matter
- Enjoy sharing knowledge and skills with others
- Completed course proposal

For current class offerings
or a course proposal form visit

PierceCE.com