


Puyallup Campus Map

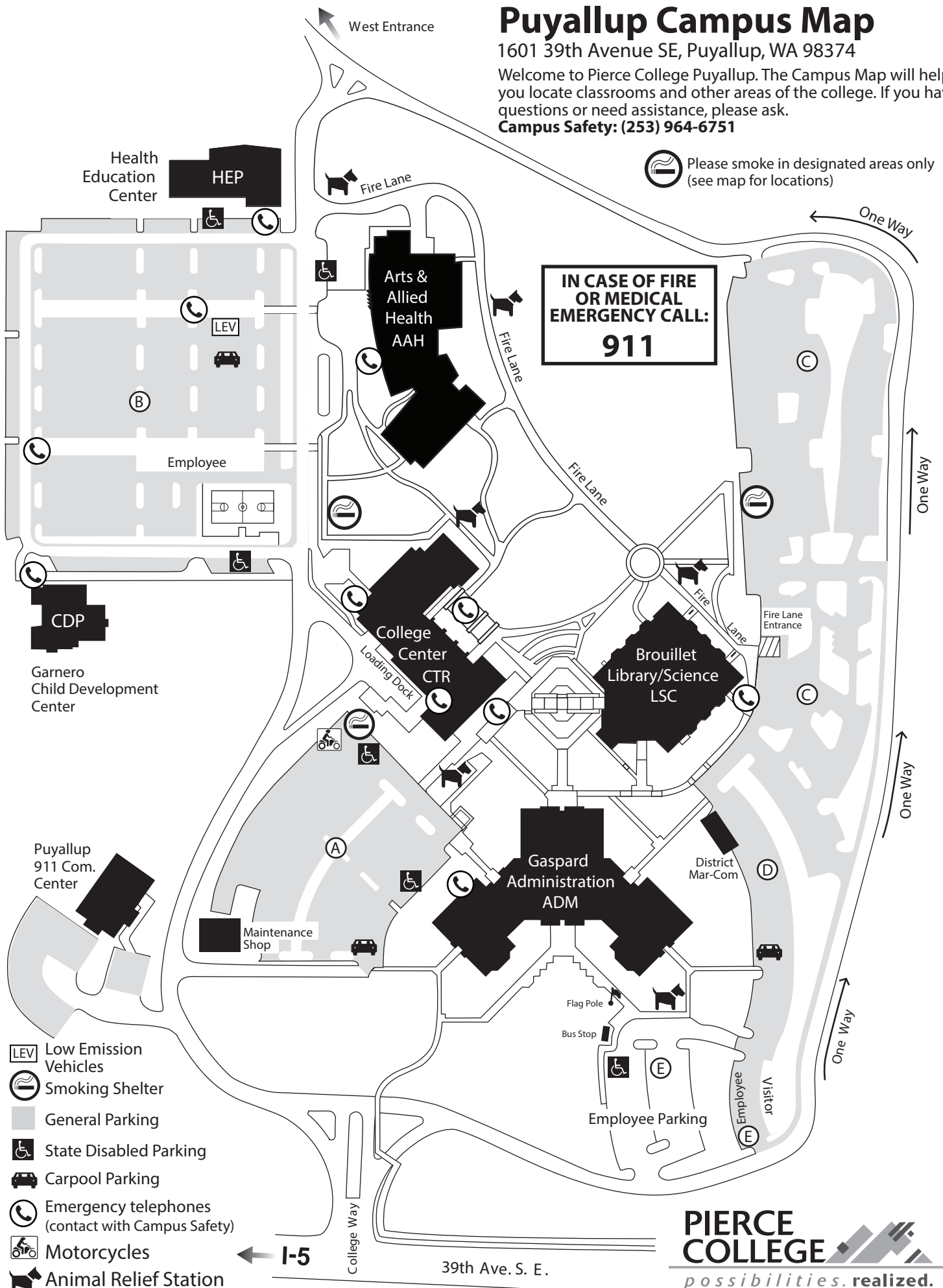
1601 39th Avenue SE, Puyallup, WA 98374









Welcome to Pierce College Puyallup. The Campus Map will help you locate classrooms and other areas of the college. If you have questions or need assistance, please ask.

Campus Safety: (253) 964-6751

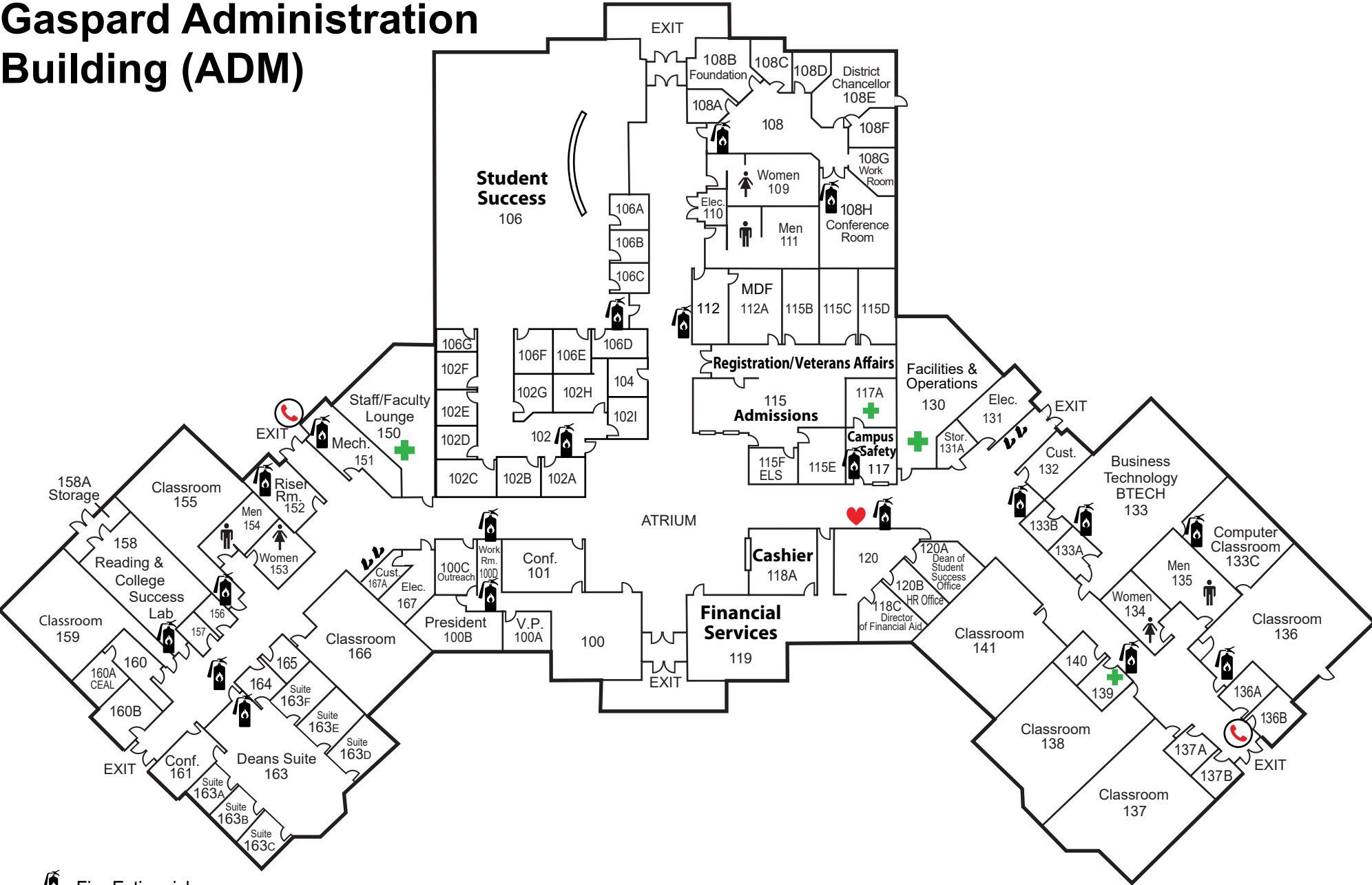
 Please smoke in designated areas only (see map for locations)






**IN CASE OF FIRE
OR MEDICAL
EMERGENCY CALL:
911**



-  Low Emission Vehicles
-  Smoking Shelter
-  General Parking
-  State Disabled Parking
-  Carpool Parking
-  Emergency telephones (contact with Campus Safety)
-  Motorcycles
-  Animal Relief Station (only service animals allowed in buildings)







Gaspard Administration Building (ADM)



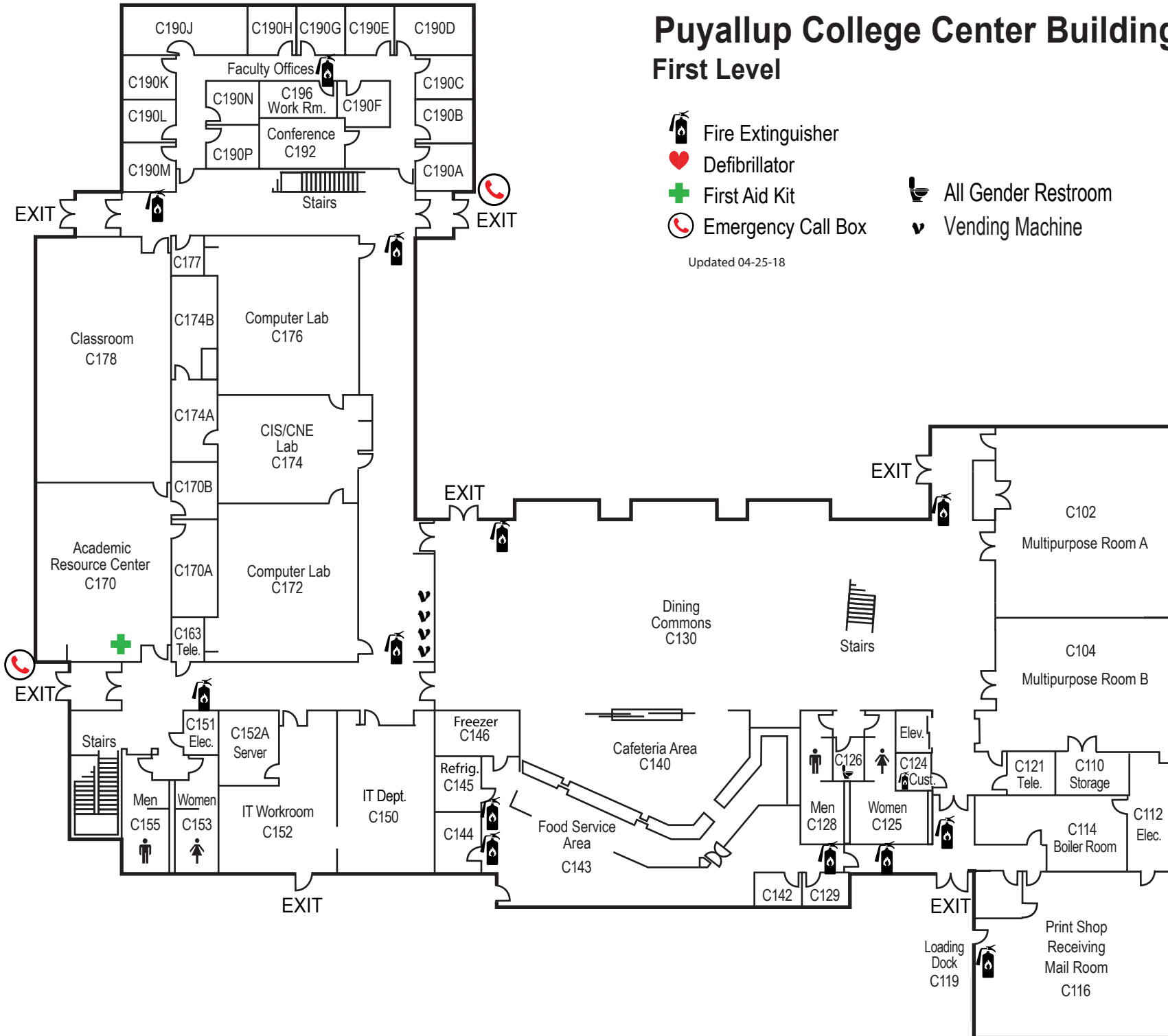
-  Fire Extinguisher
-  Defibrillator
-  First Aid Kit
-  Emergency Call Box
-  Vending Machine

Updated 12-12-18






Puyallup College Center Building (CTR) First Level

-  Fire Extinguisher
-  Defibrillator
-  First Aid Kit
-  Emergency Call Box
-  All Gender Restroom
-  Vending Machine

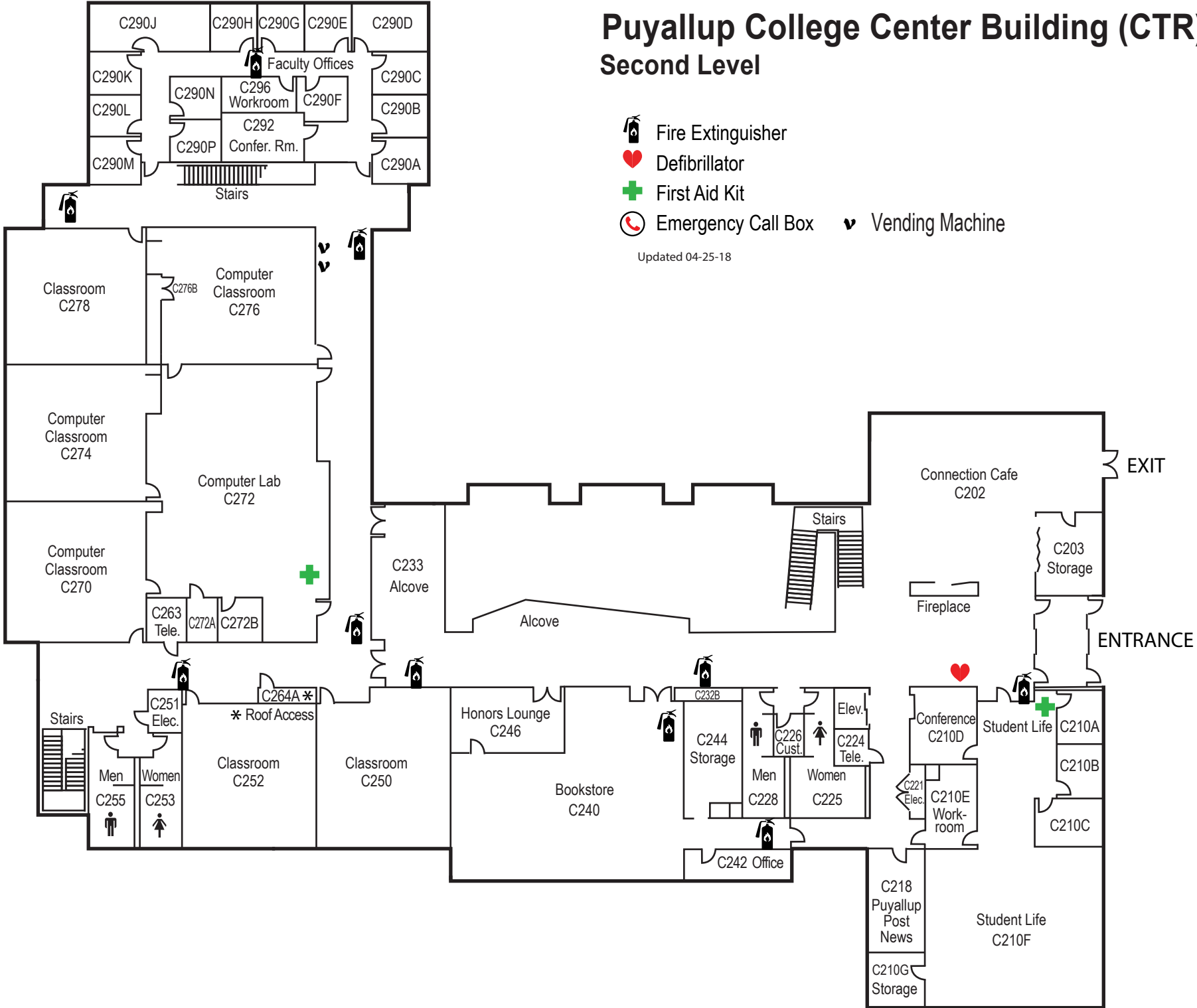
Updated 04-25-18



Puyallup College Center Building (CTR) Second Level

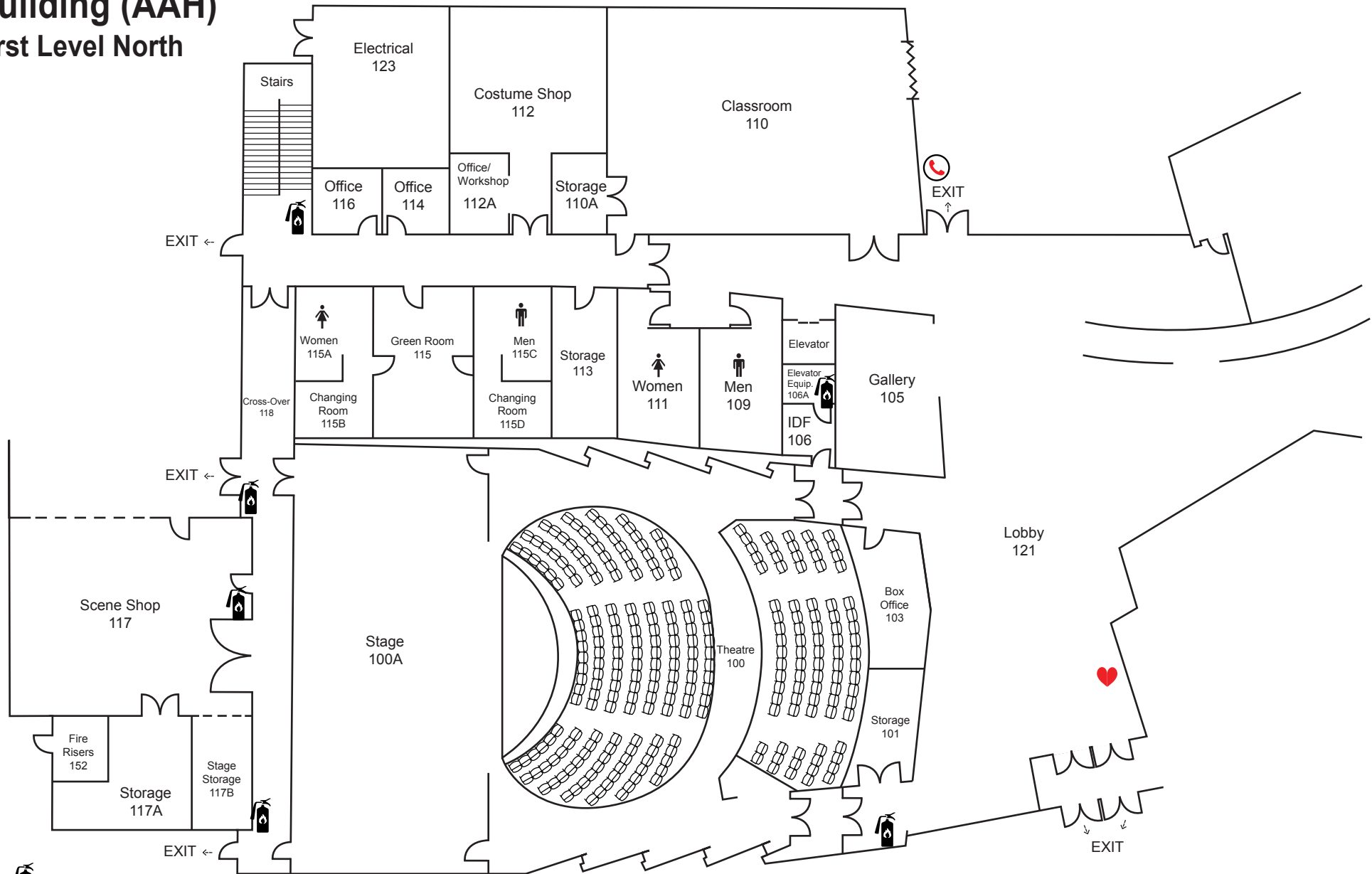
-  Fire Extinguisher
-  Defibrillator
-  First Aid Kit
-  Emergency Call Box
-  Vending Machine





Updated 04-25-18



Arts and Allied Health Building (AAH)

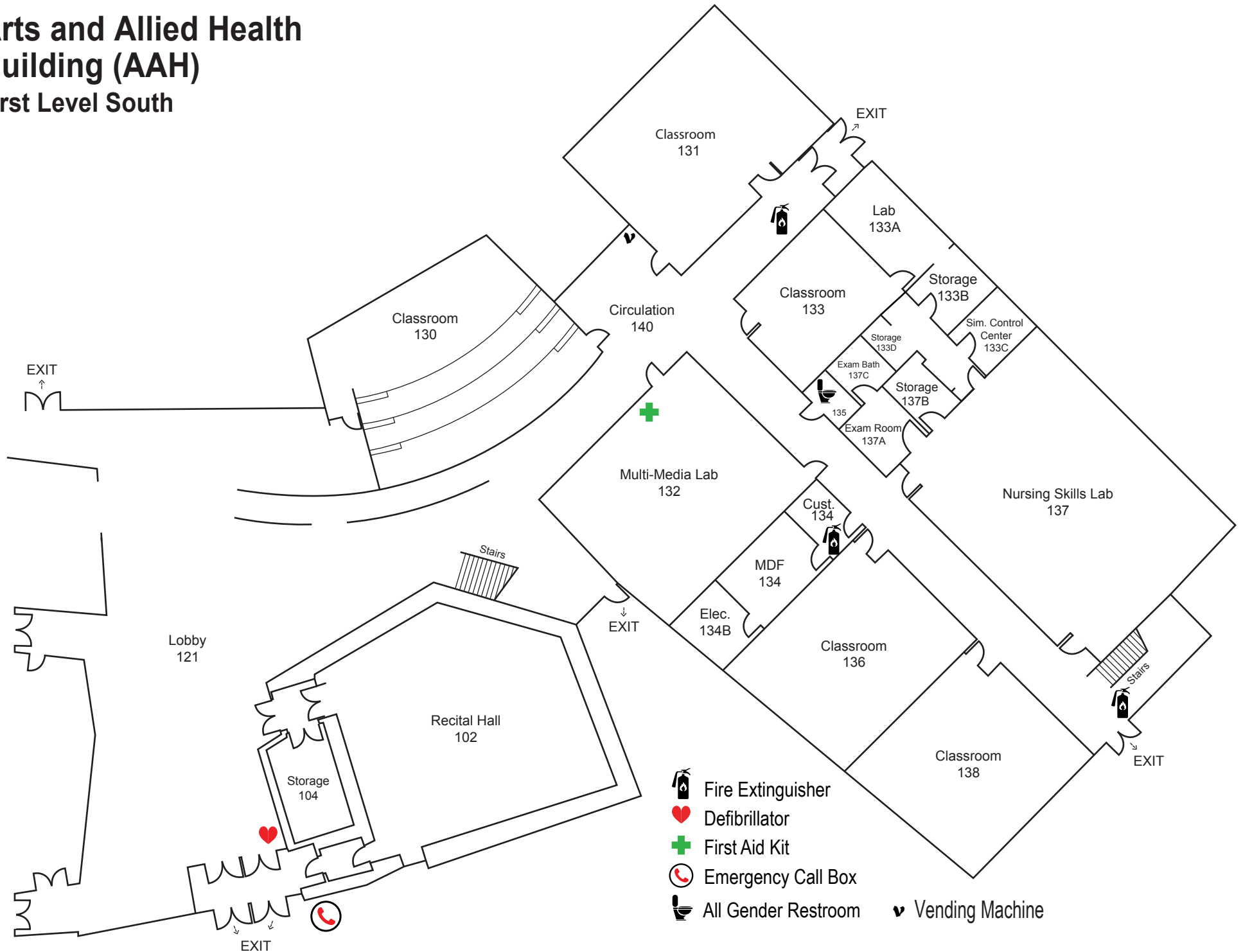
First Level North







-  Fire Extinguisher
-  Defibrillator
-  First Aid Kit
-  Emergency Call Box

Arts and Allied Health Building (AAH)

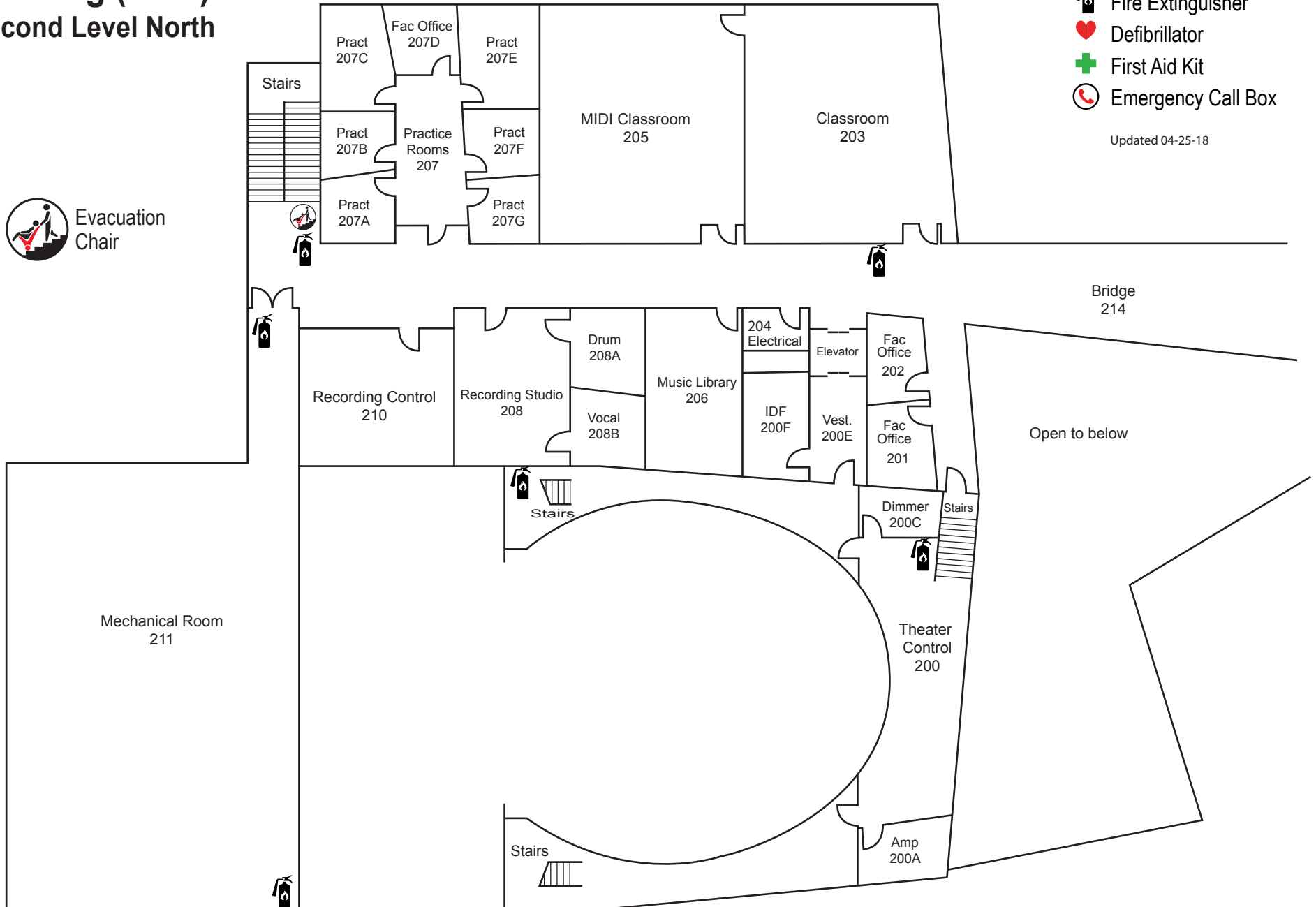
First Level South



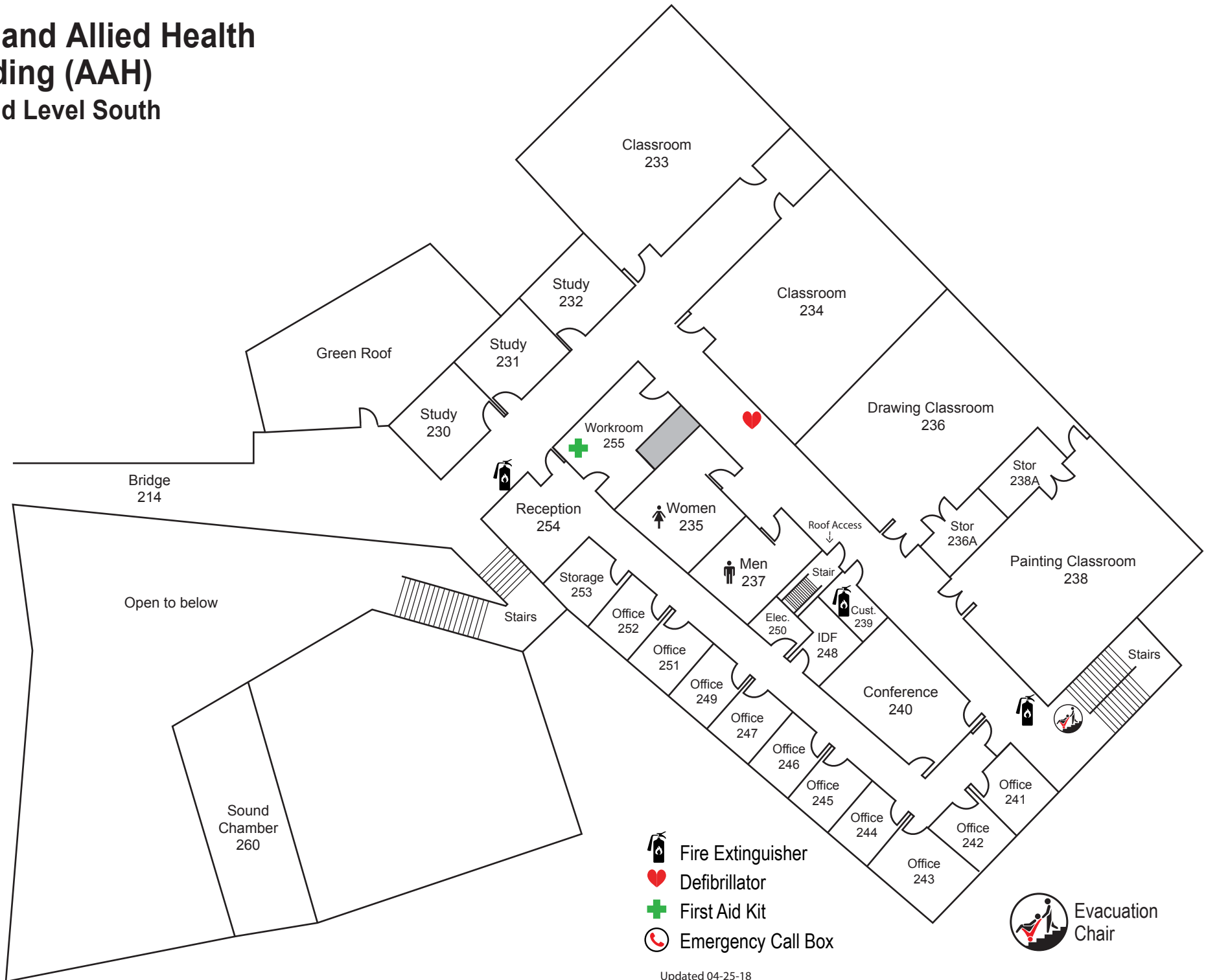
Arts and Allied Health Building (AAH) Second Level North

-  Fire Extinguisher
-  Defibrillator
-  First Aid Kit
-  Emergency Call Box

Updated 04-25-18

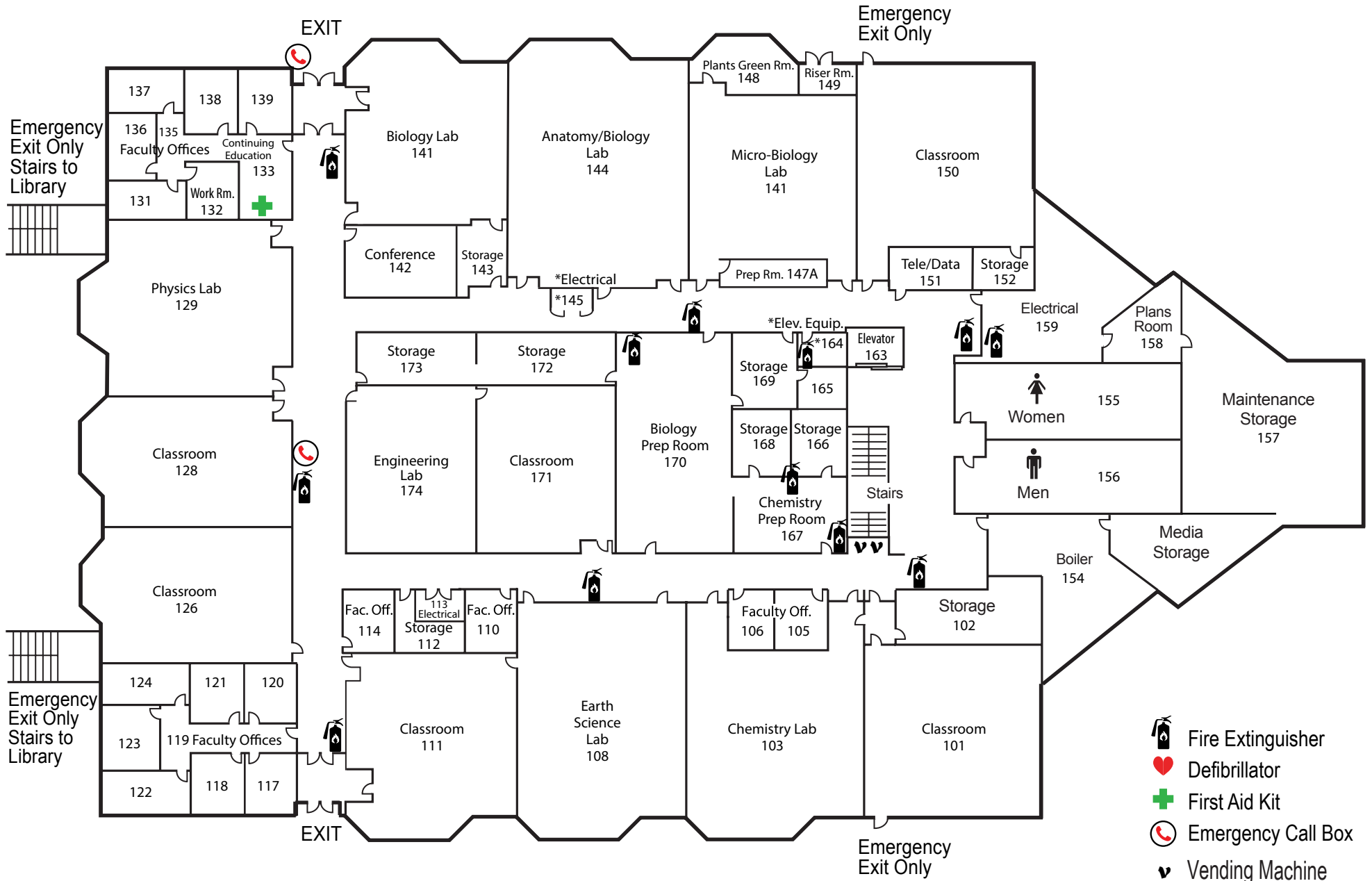


Arts and Allied Health Building (AAH) Second Level South



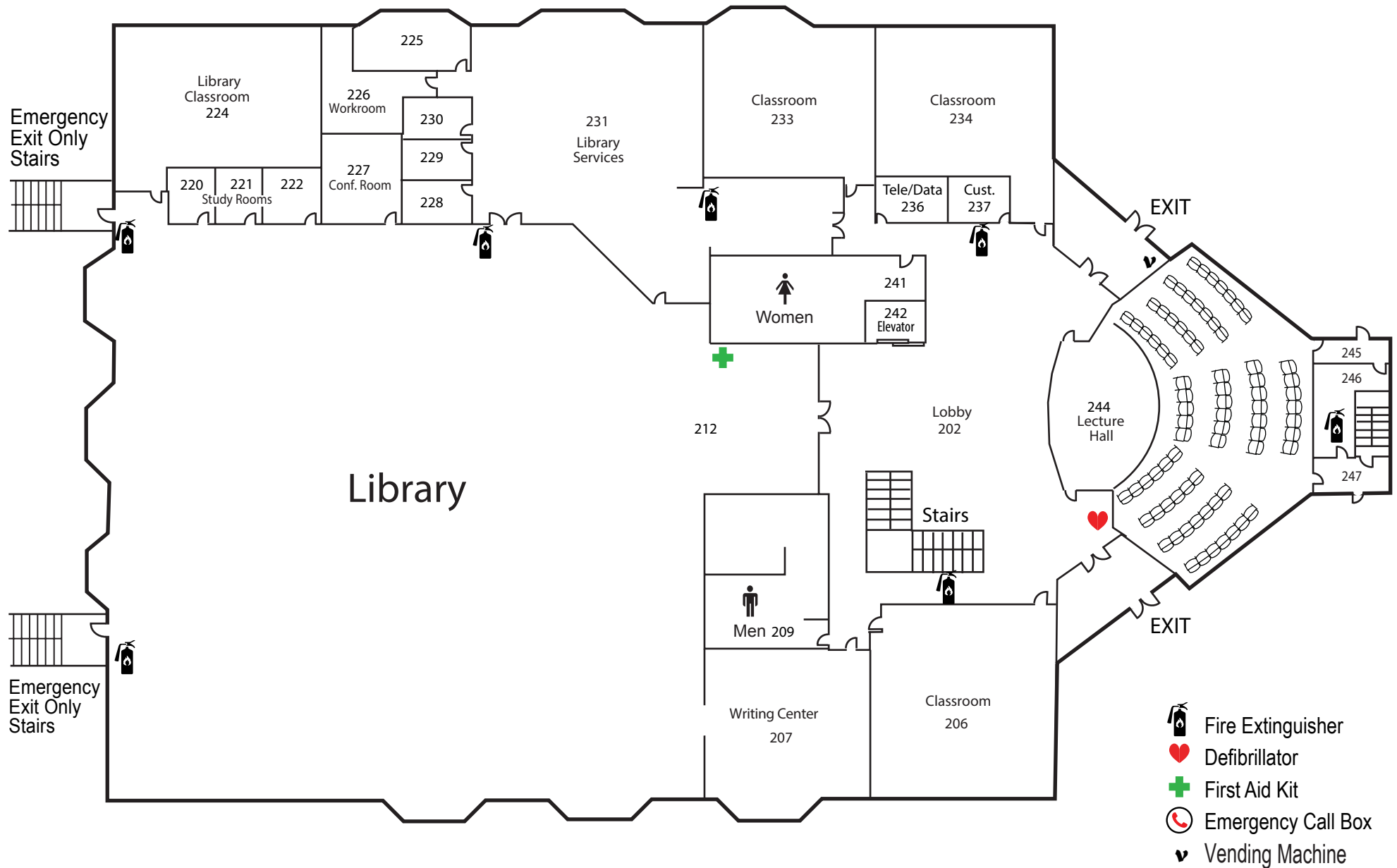
Brouillet Library/Science Building (LSC)

First Level

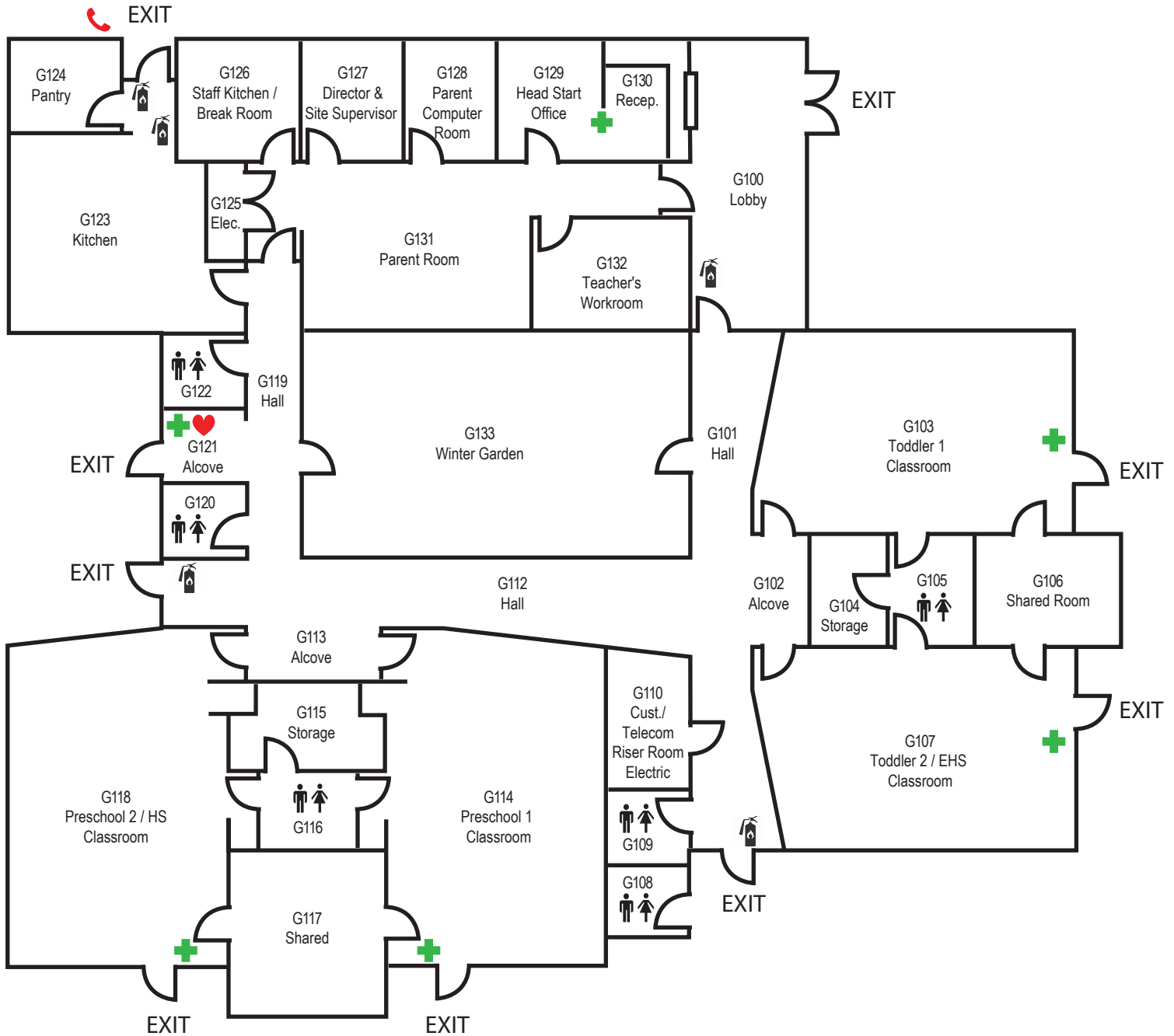






Brouillet Library/Science Building (LSC)

Second Level



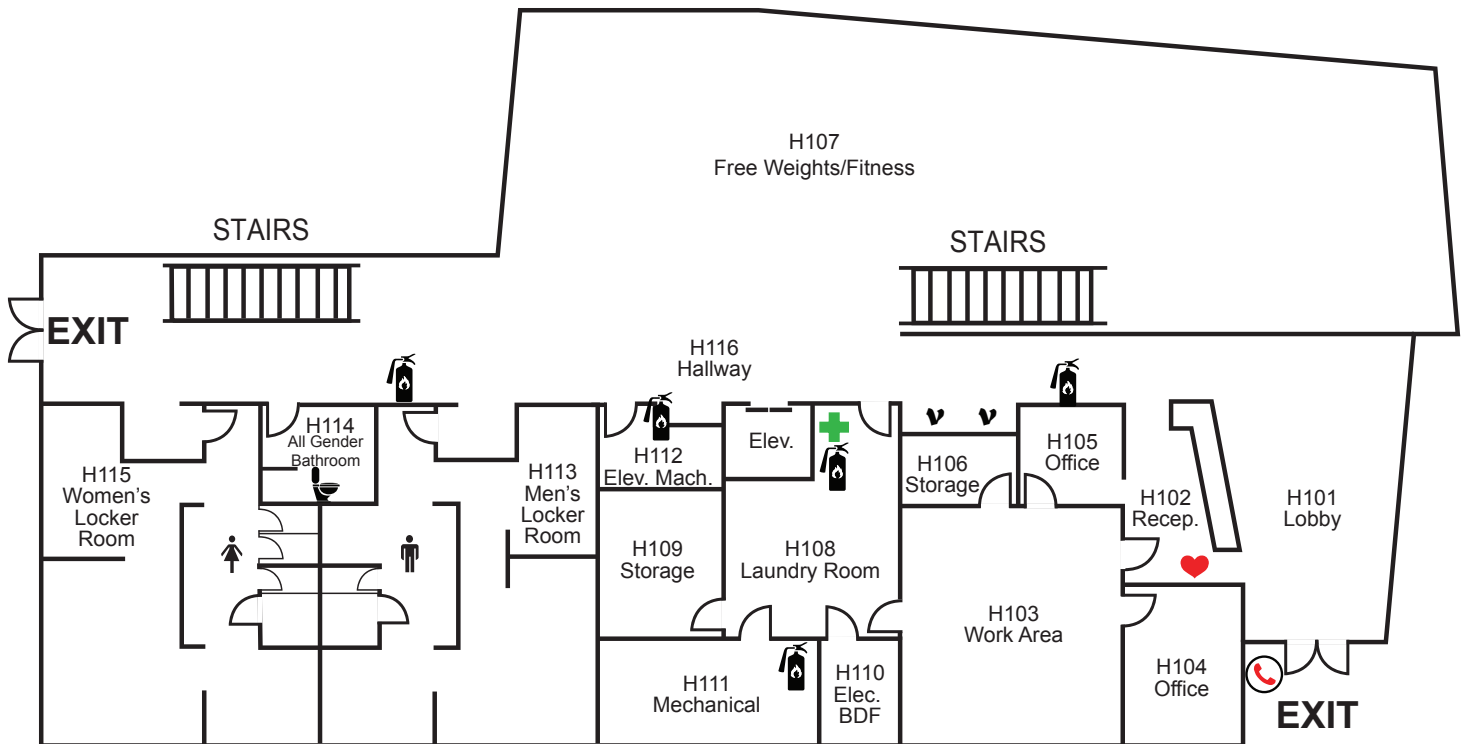
Garnero Child Development Center (CDP)



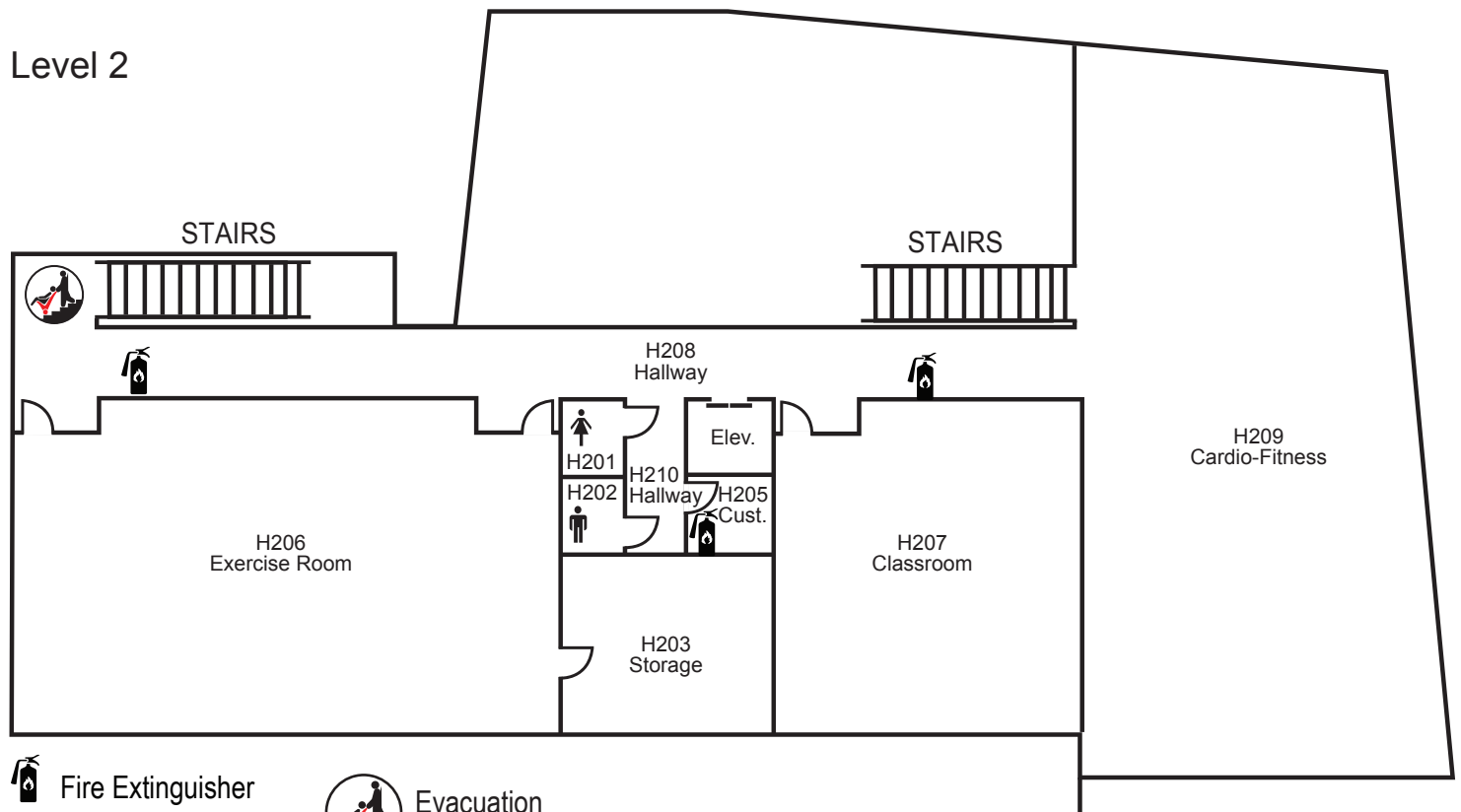
-  Fire Extinguisher
-  Defibrillator
-  First Aid Kit
-  Emergency Call Box

Health Education Center (HEP)

Level 1



Level 2



-  Fire Extinguisher
-  Defibrillator
-  First Aid Kit
-  Emergency Call Box
-  Evacuation Chair
-  All Gender Restroom
-  Vending Machine