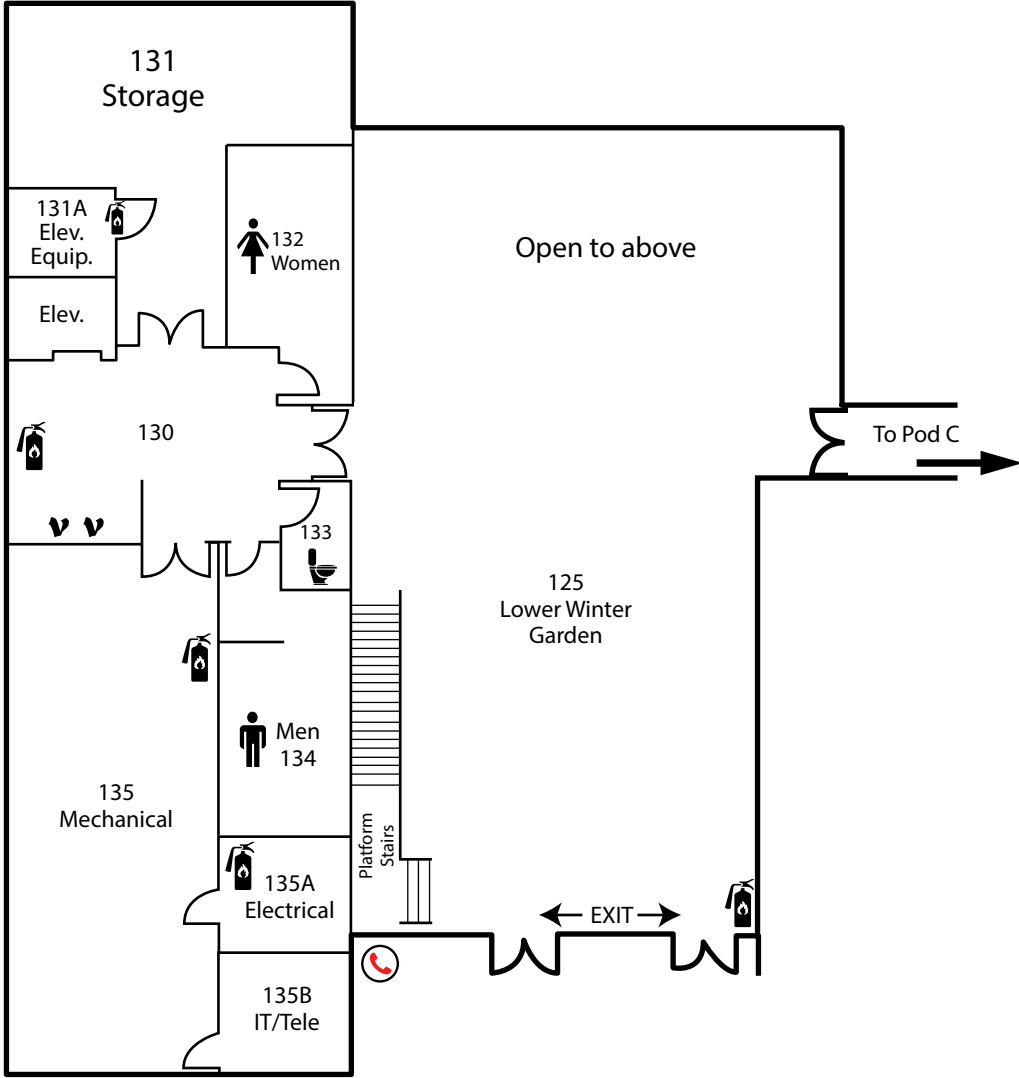






# Rainier Building (RAI)

## First/Orange Level - Pod B

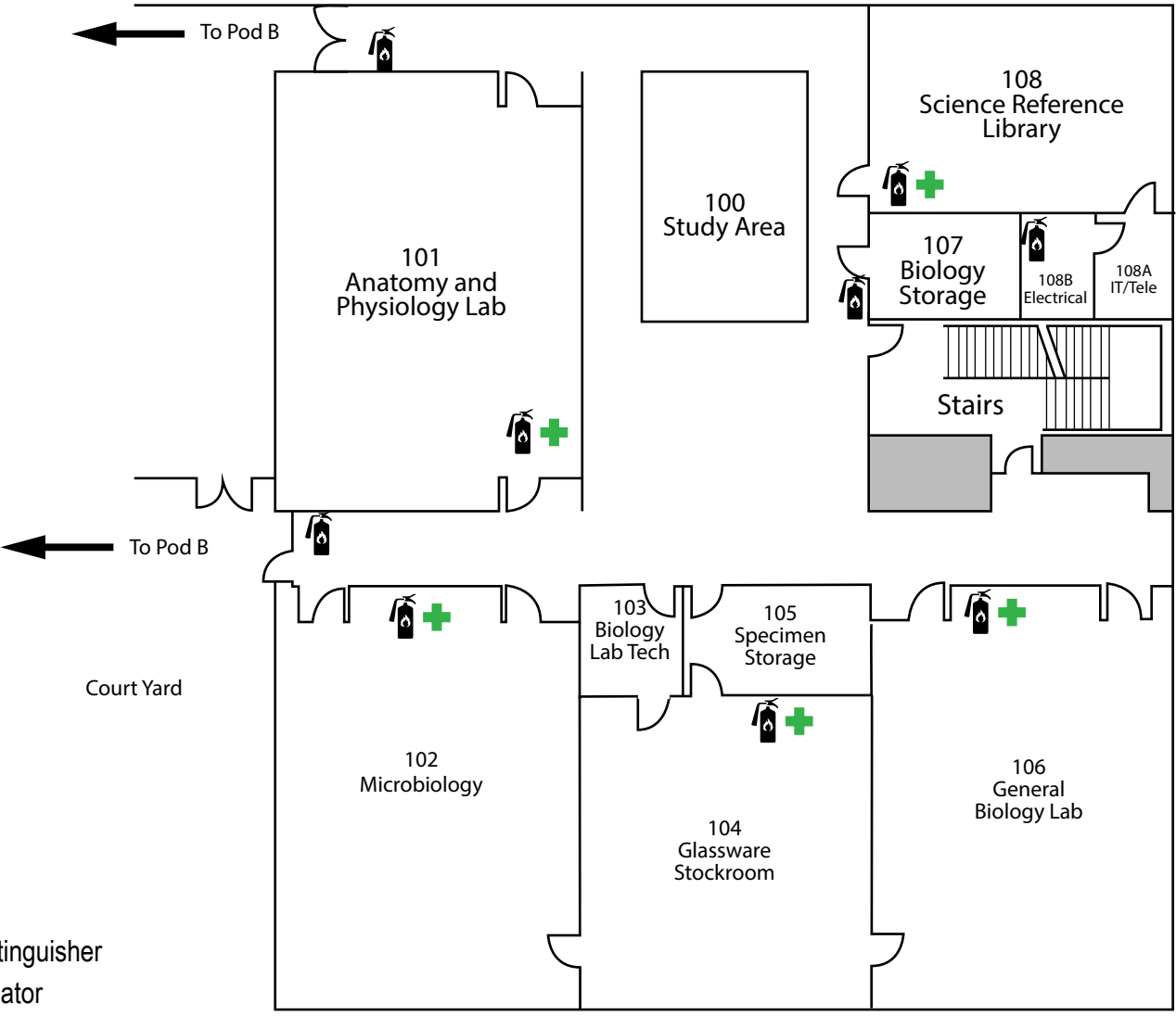






-  Fire Extinguisher
-  Defibrillator
-  First Aid Kit
-  Emergency Call Box

-  All Gender Restroom
-  Vending Machine

# Rainier Building (RAI)

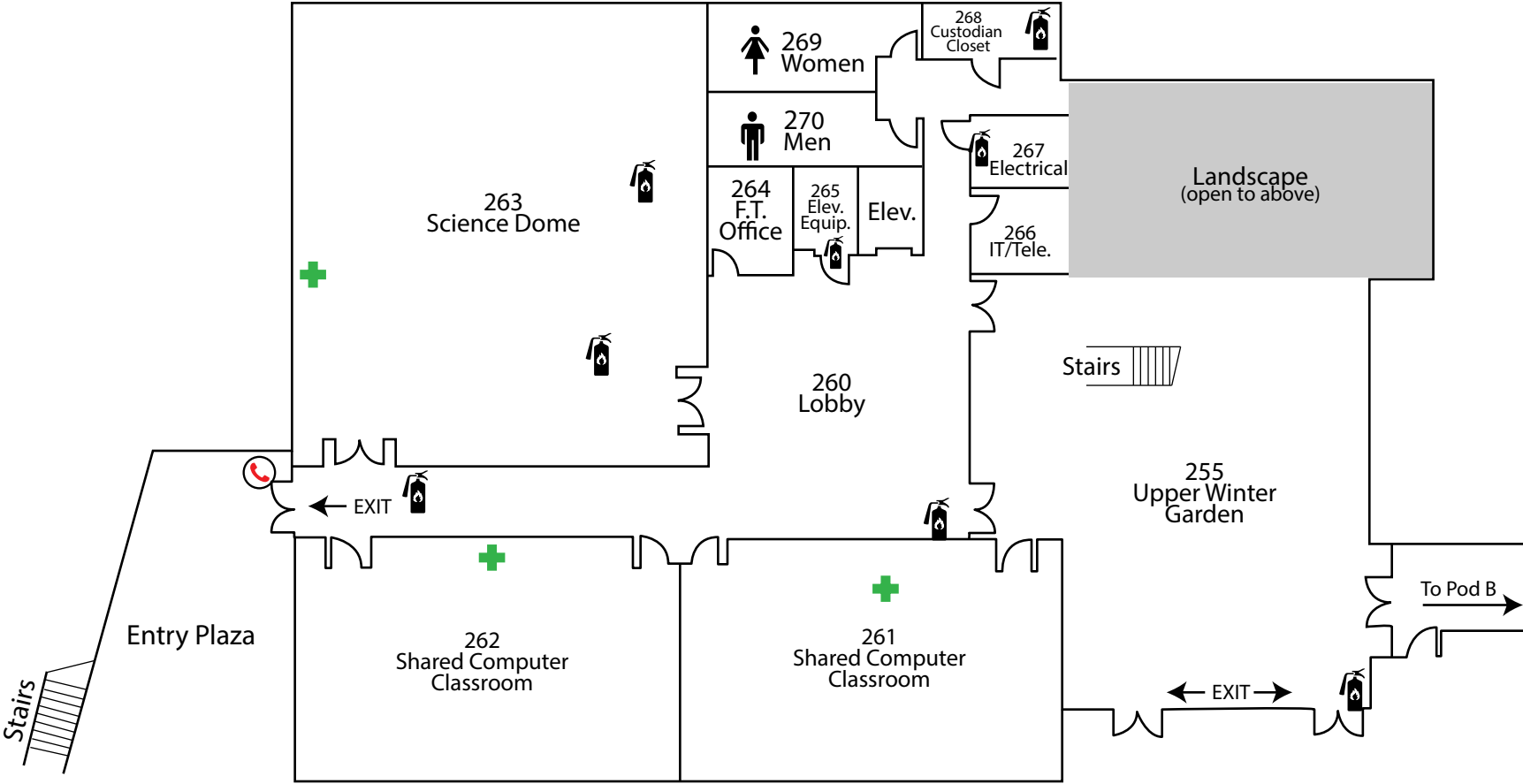
## First/Orange Level - Pod C







-  Fire Extinguisher
-  Defibrillator
-  First Aid Kit
-  Emergency Call Box





# Rainier Building (RAI)

## Second/Blue Level - Pod A

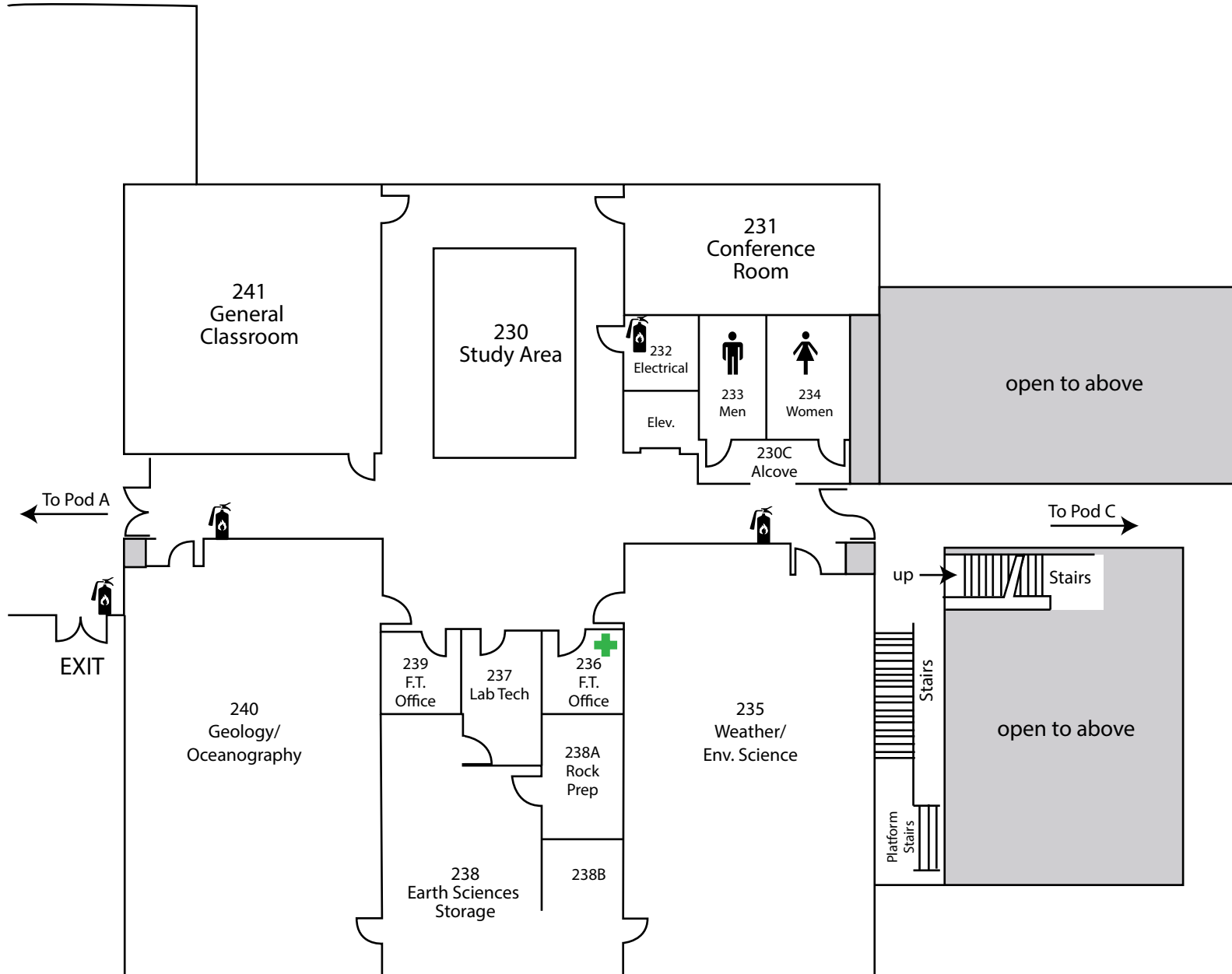


-  Fire Extinguisher
-  Defibrillator
-  First Aid Kit
-  Emergency Call Box

# Rainier Building (RAI) Second/Blue Level - Pod B

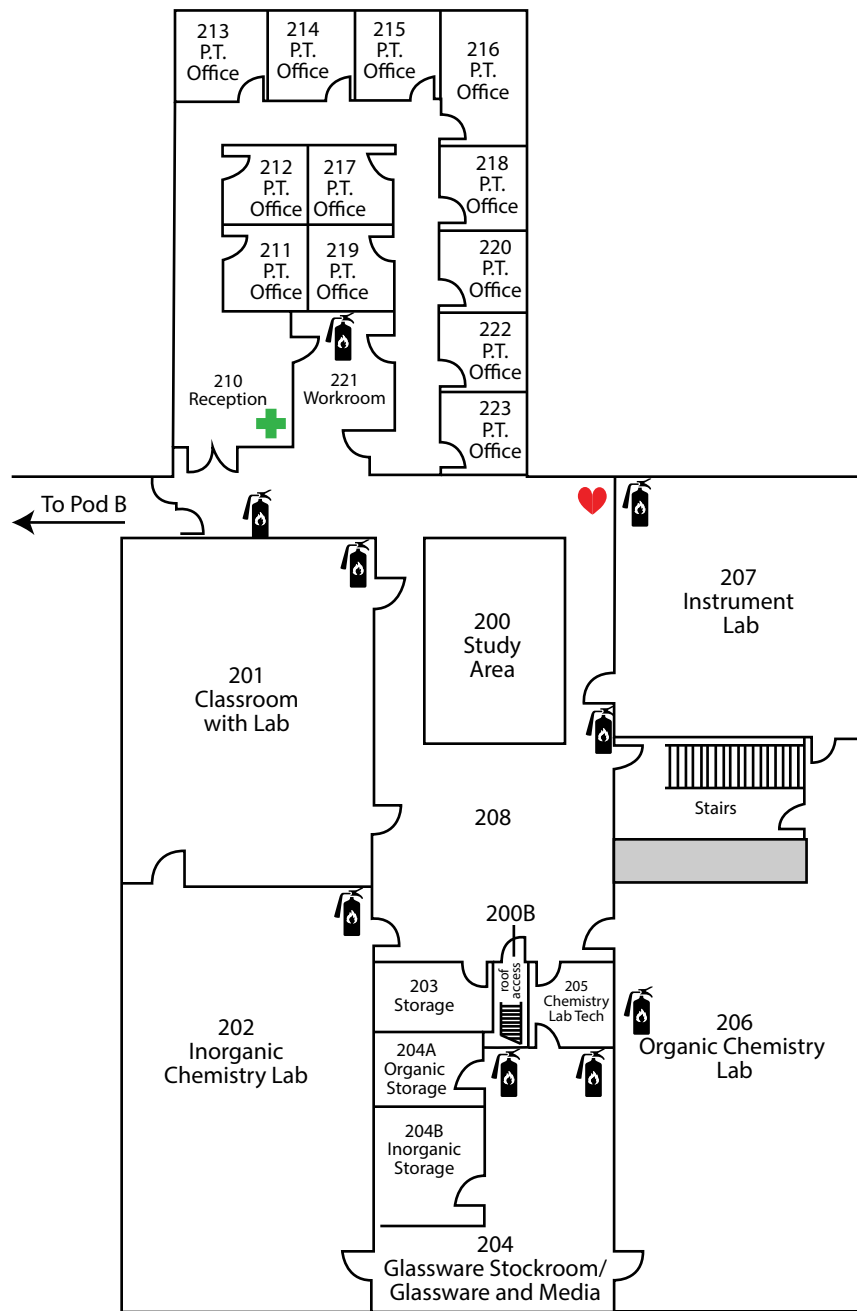
-  Fire Extinguisher
-  Defibrillator
-  First Aid Kit
-  Emergency Call Box





Updated 05-23-18



# Rainier Building (RAI)

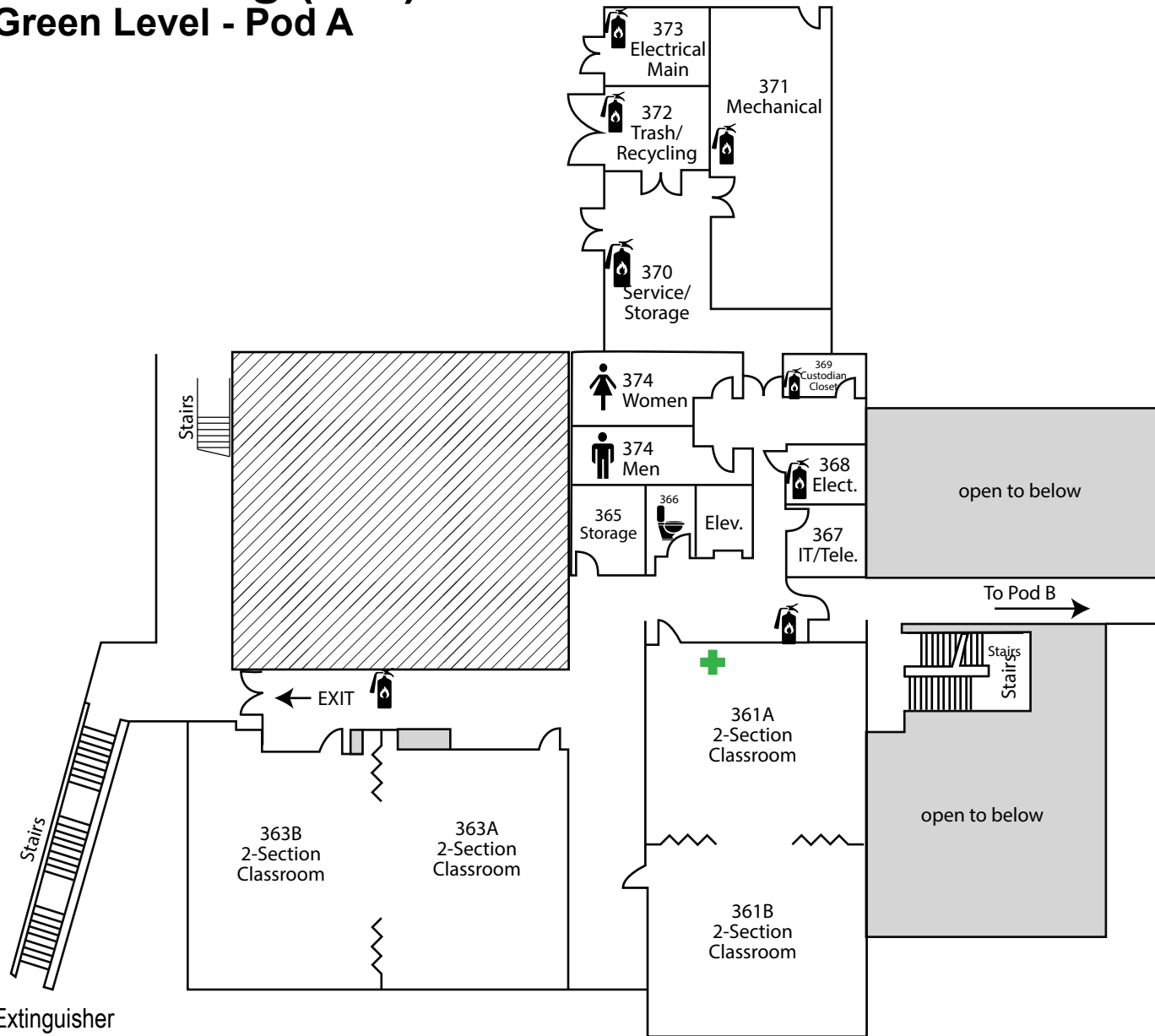
## Second/Blue Level - Pod C



-  Fire Extinguisher
-  Defibrillator
-  First Aid Kit
-  Emergency Call Box

# Rainier Building (RAI)

## Third/Green Level - Pod A



 Fire Extinguisher

 Defibrillator

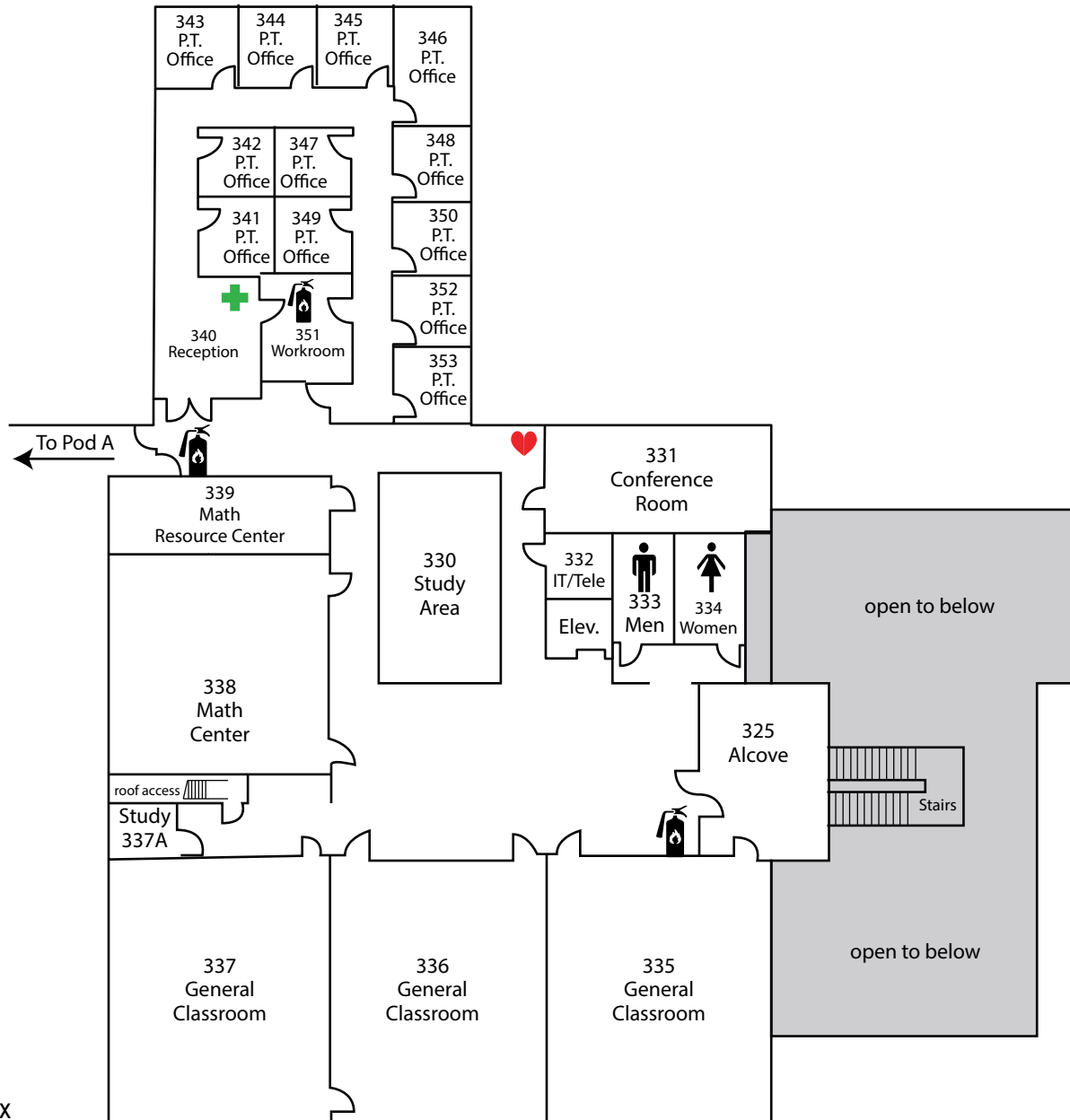
 First Aid Kit





 Emergency Call Box

 All Gender Restroom

# Rainier Building (RAI)

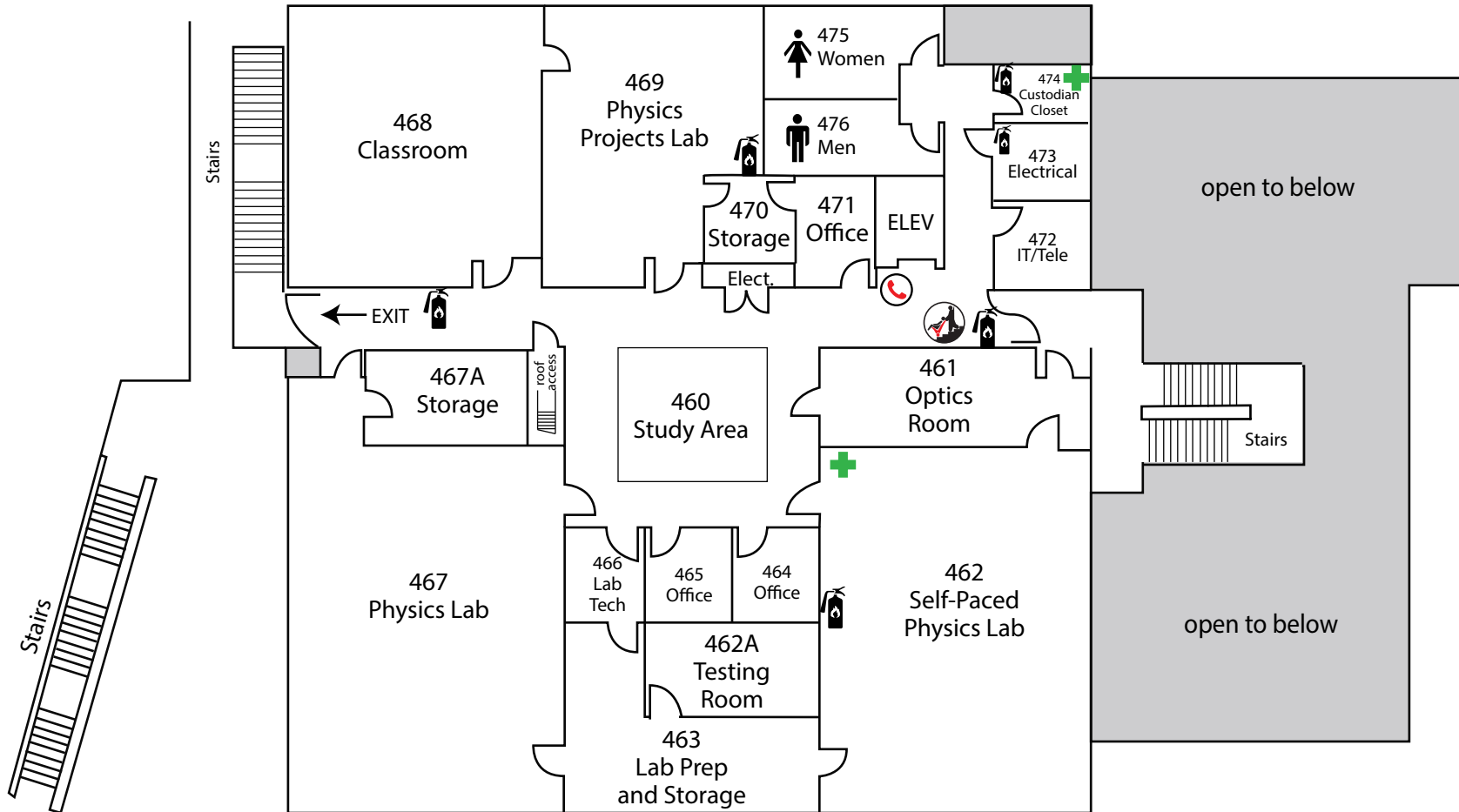
## Third/Green Level - Pod B



-  Fire Extinguisher
-  Defibrillator
-  First Aid Kit
-  Emergency Call Box

# Rainier Building (RAI)

## Fourth/Yellow Level - Pod A



 Fire Extinguisher

 Defibrillator

 First Aid Kit

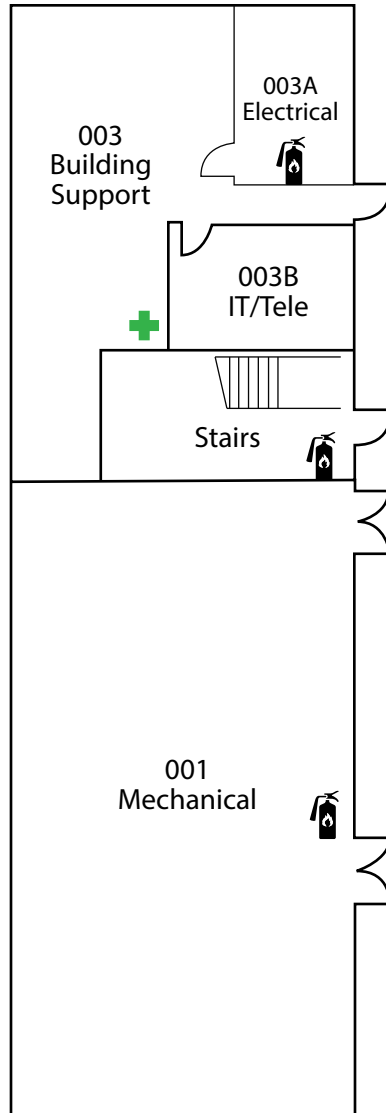
 Emergency Call Box





 Evacuation Chair



# Rainier Building (RAI)

## Basement Level - Pod C



-  Fire Extinguisher
-  Defibrillator
-  First Aid Kit
-  Emergency Call Box